



USER DOCUMENTATION

CUSTOM SERVICES

Ex Libris

© Ex Libris Ltd., 2004

Version 16.02

January 27, 2004

Table of Contents

INTRODUCTION 3

CREATING CUSTOM SERVICES 4

CUSTOM SERVICES AND THE GUI CLIENT..... 5

CUSTOM SERVICES AND THE WEB..... 9

Introduction

Custom services are programs written by customers who create their own services according to their site's requirements.

This document contains the information needed to create and integrate custom services within ALEPH 500's standard services package.

Note that custom services do not undergo the standard check and correct routines that are integral to the ALEPH Services.

Creating Custom Services

Custom programs must be placed in the `./aleph/proc` directory (for example: `/exlibris/aleph/a16_1/aleph/proc`), which you can access in `vi` by using the shortcut **ap**.

The program naming convention must comply with ALEPH's naming conventions for standard services, for example, `p_custom_01`. The numeric suffix enables the site to assign password authorization for the custom service. This is done by adding the proper authorization definitions to the `user_function.lng` table. Following is a sample of the line to be included in the `user_function.lng` table based on the `p_custom_01` example:

```
WWW-B-CUSTOM          L Custom Utilities          01
L Custom Service 01
```

The following is a simple sample of a custom service, that can be used as a template for new custom services:

```
# p_custom_01 - Custom Service
source $aleph_proc/def_local_env
start_p_generic_proc

    set a = $p1
    set b = $p2

    echo "a=" $a
    echo "b=" $b

exit:
    bl_end
    rm_f_symbol
    exit
```

The bolded lines in the above sample must appear in all custom services. Note that the first parameter is the active library (as specified in the `start_p_generic_proc` script).

The service can be run from the command line as in the following sample:

```
csh -f p_custom_01 active_library,p1,p2
```

For example:

```
csh -f p_custom_01 USM01,x,y
```

The following sections detail how to enable the user to run custom services from the GUI client and the Web interfaces.

Custom Services and the GUI Client

Custom services can be run from the GUI client as regular services. Follow the instructions below to add custom services to the GUI client.

1. Create a screen for the custom service:

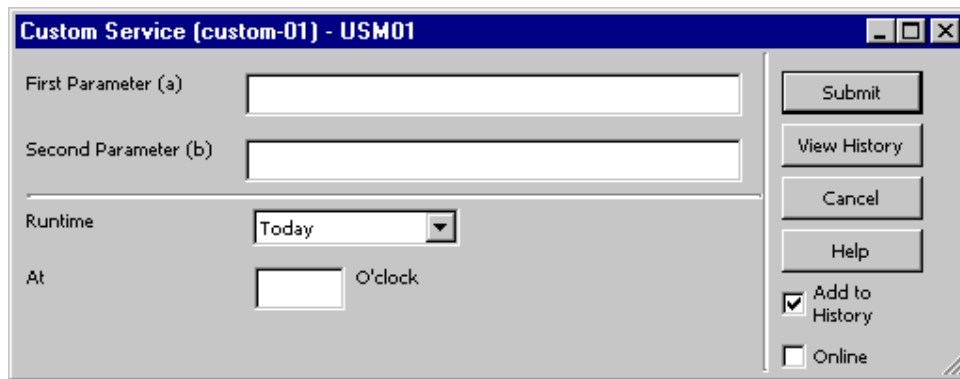
The services screens are stored in the `./alephe/pc_b_lng` directory, which you can access in vi by using the shortcut **pcb**.

Each service has two files: an XML file for the service screen, and an HTML file for the Help screen. In standard ALEPH services, the HTML file is located under a different directory, but custom services should have both files under the `./alephe/pc_b_lng` directory.

The file name for the custom service should follow the standard naming convention for services. For example `p-custom-01.xml`, based on the custom service used in this document as a sample. Following is the sample form for `p-custom-01.xml`:

```
<?xml version = "1.0"?>
<!DOCTYPE dialog SYSTEM "dialog.dtd">
<dialog>
<title>Custom Service (custom-01)</title>
<proc>p_custom_01</proc>
<ignore_print_id>
</ignore_print_id>
<control>
  <edit>
    <argname>F01</argname>
    <label>First Parameter (a)</label>
    <size>1</size>
  </edit>
</control>
<control>
  <edit>
    <argname>F02</argname>
    <label>Second Parameter (b)</label>
    <size>1</size>
  </edit>
</control>
</dialog>
```

The above is displayed in the GUI client as follows:



Note that it is possible to use the XML file of an existing standard ALEPH service as an example for the creation of the custom services XML files.

2. Add the help file for the custom service:

The HTML file for the screen service must also be located in the `./alephe/pc_b_lng` directory. As with the screen for the service, use standard naming conventions, for example, `p-custom-01.html`.

The following are sample lines from the help file for the `p_custom_01` service:

```
<!-- filename: p-custom-01 -->
<html>
<head>
<meta http-equiv="pragma" content="no-cache">
  <title>&library - custom service (custom-01)</title>

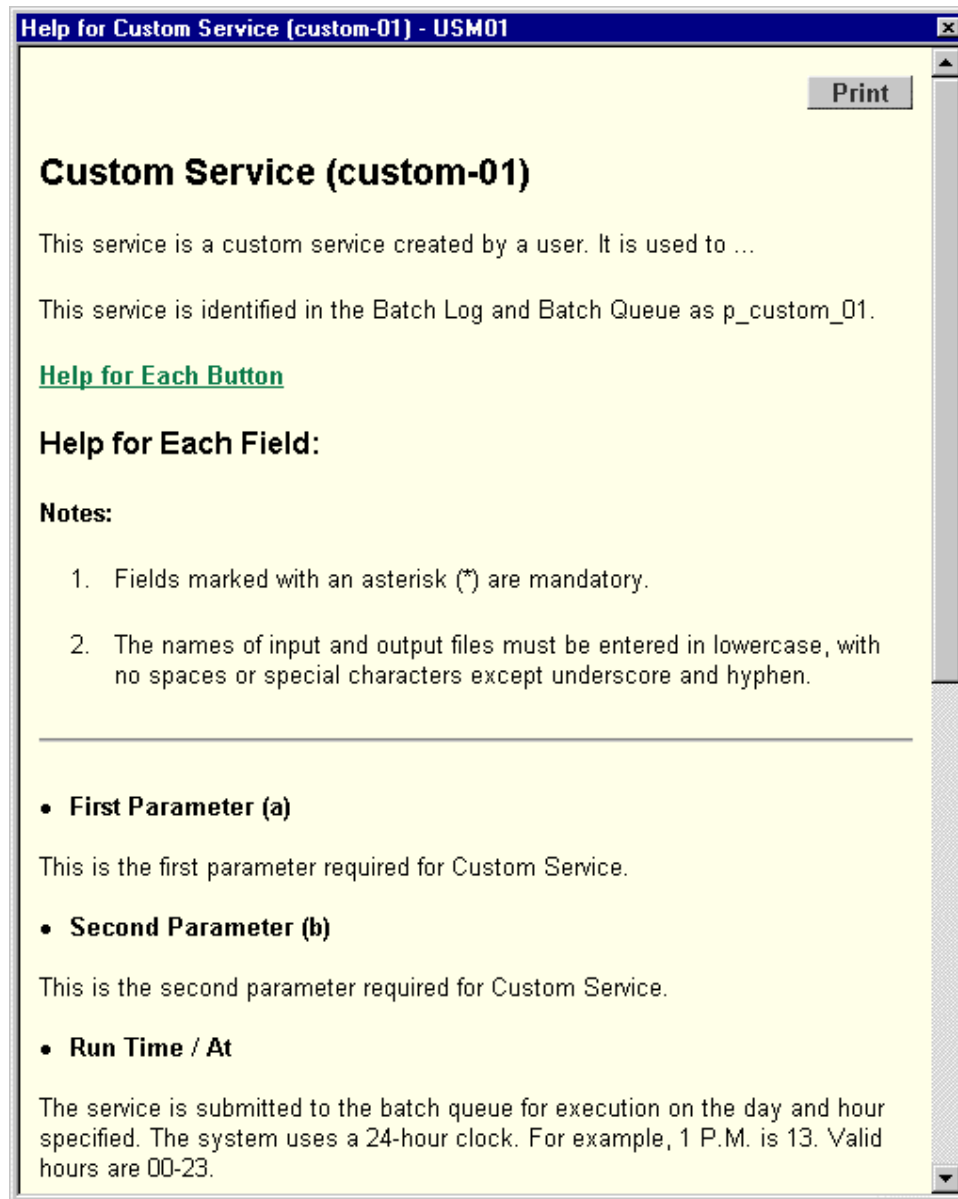
  <style type="text/css">
    body {background-color:#FFFFFFE7;font-size:10pt;
etc ...

<a name="top of screen"></a>
<div align="right">
  <a href="javascript:window.print()">
    </a>
</div>

<a name="help"></a><p class="heading1"> Custom Service (custom-
01)
</p>

This service is a custom service created by a user. It is used
to ...
<br><br>
This service is identified in the Batch Log and Batch Queue as
p_custom_01.
<br><br>
etc ...
</html>
```

This is displayed in the GUI client as follows:



The help files for standard ALEPH services are located in the `./aleph/pc_b_lng` directory (for example `/exlibris/aleph/a16_1/aleph/pc_b_eng`). You can copy a help file from an existing service to your local `./alephe/pc_b_lng` directory and then use it as the base for the custom services help file.

3. Add the custom service to the **Services** menu of the desired module:

Each module has a menu named **Services** on the menu bar. The **Services** menu options are controlled by a set of files prefixed by menu- (for example, menu-acq.xml). Following is a list of the current menu files:

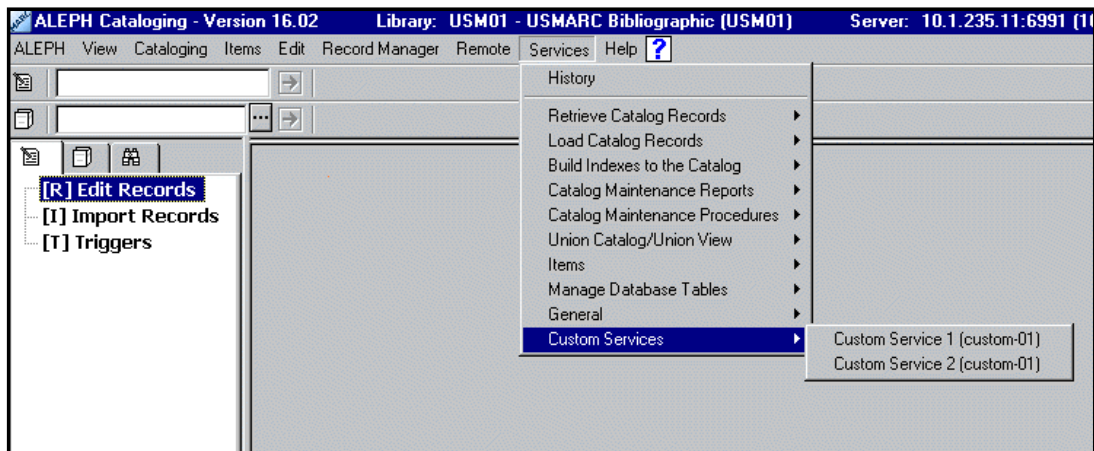
```
menu-acq.xml
menu-catalog.xml
menu-catalog-adm.xml
menu-catalog-aut.xml
menu-catalog-hol.xml
menu-circ.xml
menu-ill.xml
```

Services under the **Acquisitions** module are listed in the menu-acq.xml file. Services listed under the **Cataloging** module when connected to a holdings library are listed under the menu-catalog-hol.xml file, and so on.

It is recommended to add the custom services under a separate category (submenu), for example, under **Custom Services**. The following are sample lines that can be added to any of the menu files listed above to include the p-custom-01 and p-custom-02 services:

```
<sub_menu>
<group_caption>Custom Services</group_caption>
  <item>
    <display>Custom Service 1 (custom- 01)</display>
    <file>p-custom-01</file>
  </item>
  <item>
    <display>Custom Service 2 (custom- 02)</display>
    <file>p-custom-02</file>
  </item>
</sub_menu>
```

When the above lines are added to the **Services** menu of the **Cataloging** module, they display as follows in the GUI client:



Custom Services and the Web

There are some special ALEPH interfaces that do not require a GUI client (for example, some **Union Catalog** installations). In this case, it is possible to integrate custom services to the Web management interface.

Follow the instructions below to add custom services to the Web interface:

1. Create a page for the custom service:

The services pages must be stored in your local `./alephe/www_c_eng` directory. As with custom services added to the GUI client, use standard naming conventions for the services HTML page, for example, `c-custom-01` (note that the prefix used in this case is **c** instead of **p**).

The following are sample lines from the Web page for the `p_custom_01` service:

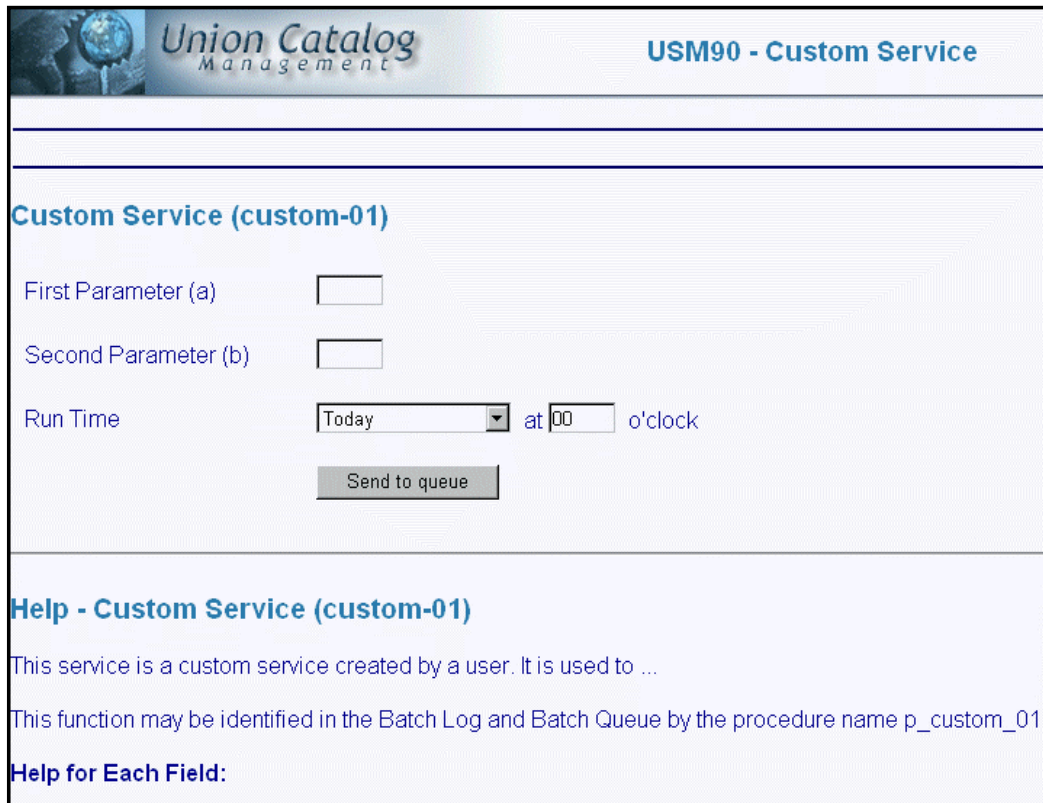
```
<!-- filename: c-custom-01 -->
<html>
<head>
  <title>Custom Service (custom-01)</title>
<include>meta-tags
<link rel="stylesheet" href="&server_httpd/management.css"
type="text/css">
</head>
<body topmargin="0" leftmargin="0">
<include>c-banner\XXX\Custom Service
<include>c-heading
<p class="title">
<a name="top of screen"></a> Custom Service (custom-01)</p>

<form name=form1
      method=GET
      action="&server_c">

<input type=hidden name=func value=service>

<input type=hidden name=proc_name value=p_custom_01>
<table cellspacing=0 cellpadding=10 width="80%">
<tr>
  <td width="25%">First Parameter (a)</td>
  etc ...
</table>
</html>
```

This is displayed in the Web interface as follows:



The screenshot shows a web interface for "Union Catalog Management" with a sub-header "USM90 - Custom Service". The main content area is titled "Custom Service (custom-01)" and contains the following fields:

- First Parameter (a):
- Second Parameter (b):
- Run Time: Today (dropdown) at 00 (input) o'clock
- Send to queue:

Below the form is a "Help - Custom Service (custom-01)" section with the following text:

This service is a custom service created by a user. It is used to ...

This function may be identified in the Batch Log and Batch Queue by the procedure name p_custom_01.

Help for Each Field:

Note that it is possible to use the HTML file of an existing standard ALEPH service as an example for the creation of the custom service's Web page.


2. Add the custom service to the list of available services:

The list of services is determined by the `c-service-list` file located under your local `./alephe/www_c_eng` directory.

It is recommended to add the custom services under a separate category, for example, under **Custom Services**. The following are sample lines that can be added to the `c-service-list` file to include the `p-custom-01` and `p-custom-02` services:

```
<p class="text3">
  Custom Services
</p>
<ol class="service">
  <li><a href="&server_c?func=file&file_name=c-custom-01"
    class="service">
    Custom Service 1 (custom-01)</a>
  <li><a href="&server_c?func=file&file_name=c-custom-02"
    class="service">
    Custom Service 2 (custom-02)</a>
</ol>
```

This is displayed in the list of services as follows:



The screenshot displays the 'Union Catalog Management' interface. At the top left is a logo featuring a globe. To the right of the logo, the text 'Union Catalog' is written in a large, serif font, with 'Management' in a smaller, sans-serif font below it. Below the header, there are two links: 'New Login' and 'Change Library'. The main content area is divided into three sections: 'Manage Database Tables', 'Manage Union Catalog Services', and 'Custom Services'. Each section contains a numbered list of services.

[New Login](#) [Change Library](#)

Manage Database Tables

1. Count (manage-06)
2. Direct Index (manage-05)
3. Create links between records (manage-12)
4. Word Index (manage-01)
5. Headings Index (manage-02)
6. Sort Index (manage-27)
7. Short Bibliographic Record (manage-07)

Manage Union Catalog Services

1. Initialize Equivalence table (union-01)
2. Create Equivalence table (union-02)
3. Convert Incoming Records (union-03)
4. Load Converted Records (union-13)
5. Create Equivalence table for New Records

Custom Services

1. Custom Service 1 (custom-01)
2. Custom Service 2 (custom-02)