



BENUTZERDOCUMENTATION (ALEPHINO 4.0)

# Alephino GUI with Terminal-Server

---

# Contents

<a href="#">1 INTRODUCTION.....</a>	<a href="#">2</a>
<a href="#">2 CONFIGURATION.....</a>	<a href="#">2</a>
<a href="#">2.1 PROFILE.DAT.....</a>	<a href="#">2</a>
<a href="#">2.2 ALEPHCOM.INI.....</a>	<a href="#">3</a>

## 1 Introduction

In a network environment, the Alephino GUI may be used by several users simultaneously. This means that you only need to maintain one central installation. Distributing and updating the software on multiple workstations is no longer necessary. Furthermore, it allows you to use Thin-Clients in a terminal server environment. (Citrix, Microsoft Terminal Server). Temporary files and files that contain user specific settings are administrated in individual directories.

But please note this documentation with reservation. Due to the variety of Terminal Server software we cannot give support and no guarantee for an error-free operation of the Alephino Clients in a Terminal Server environment.

## 2 Configuration

To setup the Alephino GUI, please proceed as follows:

### 2.1 profile.dat

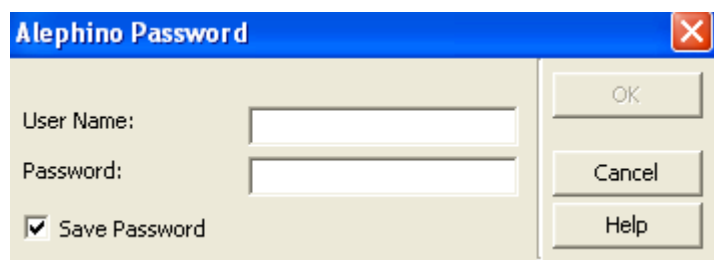
Create a file *profile.dat* in subdirectory *alephcom/tab*. This file contains the profile name of the user(s) (1<sup>st</sup> column) and the path for individual Alephino files (2<sup>nd</sup> column).

As soon as such a file *profile.dat* exists, the following dialog will appear when starting the Alephino Client, asking you to enter your profile name.



The dialog is initialised with the default value of the windows user name. Please make sure, that the path specified in *profile.dat* exist and that the user has full access rights for this directory.

After verifying you will get the Alephino Login where you have to put in user and password. It is now allocated to the Alephino user. Make sure that checkbox “Save Password” is activated.



### Hint:

The file *profile.dat* has fixed columns. This structure must be followed!  
Do not use tabs.

```
!!!!!!!!!!!!!!!!!!!!!!!!!!!!!!!!!!!!!!!!!!!!!!!!!!!!!!!!!!!!!!!!!!!!!!!!!!!!!!!!!!!!!!!!!!!!!!!!!!!!!!!!!!!!!!!!!!!!!!!!-!-!!!!!!!!!!!!!!!!!!!!!!!!!!!!!!!!!!!!!!!!!!!!!!!!!!!!!!!!!!!!!!!!!!!!!!!!!!!!!!!!!!!!!!!!!!!!!!!!!!!!!!!!!!!!!!!!!!!!!!!!-->
HugoM                                                    N:/alephino/hugo
SusiS                                                    N:/alephino/susi
FrankB                                                  N:/alephino/frank
```

## 2.2 alephcom.ini

After the first start with the cataloguing module, you will find in subdirectory *alephcom/tab* of the special profile a file *alephcom.ini* with the following content:

```
[Date_Format]
DateDisplayStyle=1
TimeDisplayStyle=1
```

To make sure that all temporary print files will be stored in the individual directories and thus to avoid conflicts when using print or e-mail functions simultaneously, we recommend to add the following definitions.

(Example)

```
[Main]
TempDir=N:\alephino\frank\temp
```

```
[Print]
TempDir=N:\alephino\frank\temp
```

### Explanation:

The central file *alephcom/tab/alephcom.ini* contains a lot of settings concerning all GUI clients. If a parameter with the same name exists in a user specific file *[userdir]/alephcom/tab/alephcom.ini* it takes precedence over the central installation file.