



USER DOCUMENTATION (ALEPHINO 4.0)

Z39.50 Services

Table of contents

1 DESCRIPTION.....	3
2 APPLICATION.....	3
3 SETUP AND ADMINISTRATION.....	4
3.1 DEFINING AND MODIFYING A TARGET.....	4
3.2 SETUP OF THE ALEPHINO CLIENTS AND THE WEB OPAC.....	7
3.2 SETUP OF THE SERVER	10
3.3 SETUP OF THE Z39.50 SERVER	11
4 APPENDIX A: SELECTED ACCESS INFORMATION.....	12

1 Description

Searches in further library catalogues via the Z39.50 gateway allow both the patron and the library staff to use additional information sources. Z39.50 in this context is the international standard protocol to - through a query - communicate in heterogeneous environments with several systems at the same time, without leaving the familiar interface of the WWW-OPAC or the Search tab.

Alephino supports Z39.50 and that way can integrate any information system which also supports Z39.50 into the search interface and present as search result next to the local titles. The bibliographic records may be taken over by the librarian from the search interface directly into the Alephino catalogue and edited there.

Thus, the Z39.50 gateway is not only a tool for supplying the patron with an enlarged choice of information but also an indispensable instrument for efficient cataloging by using records retrieved from external databases.


Z39.50 server is also available. Thus, you have the opportunity to offer your local database(s) to be retrieved via the internet using the Z39.50 standard protocol. Even Web-based search portals - like MetaLib from Exlibris is - will often use the Z39.50 protocol to address a variety of databases.

The Alephino Z39.50 gateway has in fact been available for a while (independently from a version), but from version 2.2 onwards the formerly separate Z39.50 gateway environment has been completely integrated into the Alephino server environment. The administration and configuration of the gateway (e.g. defining the targets) may be done via a Web client.

2 Application

The Alephino server (..\bin\alephino[.exe]) and the Z39.50 Gateway (..\bin\zgate[.exe]) must be started. Please note that the operation of the Z39.50 Gateway requires a licence from Ex Libris (Deutschland) GmbH.

The workflow is as follows:

1. Start the Cataloging module and connect to your normal title masterfile
2. Activate the search tab and connect there to the desired target (e.g. Z-MRC)
3. Retrieve the desired title and bring it into full view
4. Push the record via the button  to the cataloging tab
5. Duplicate the record into your local Alephino database (menu "Cataloging" / Duplicate record).

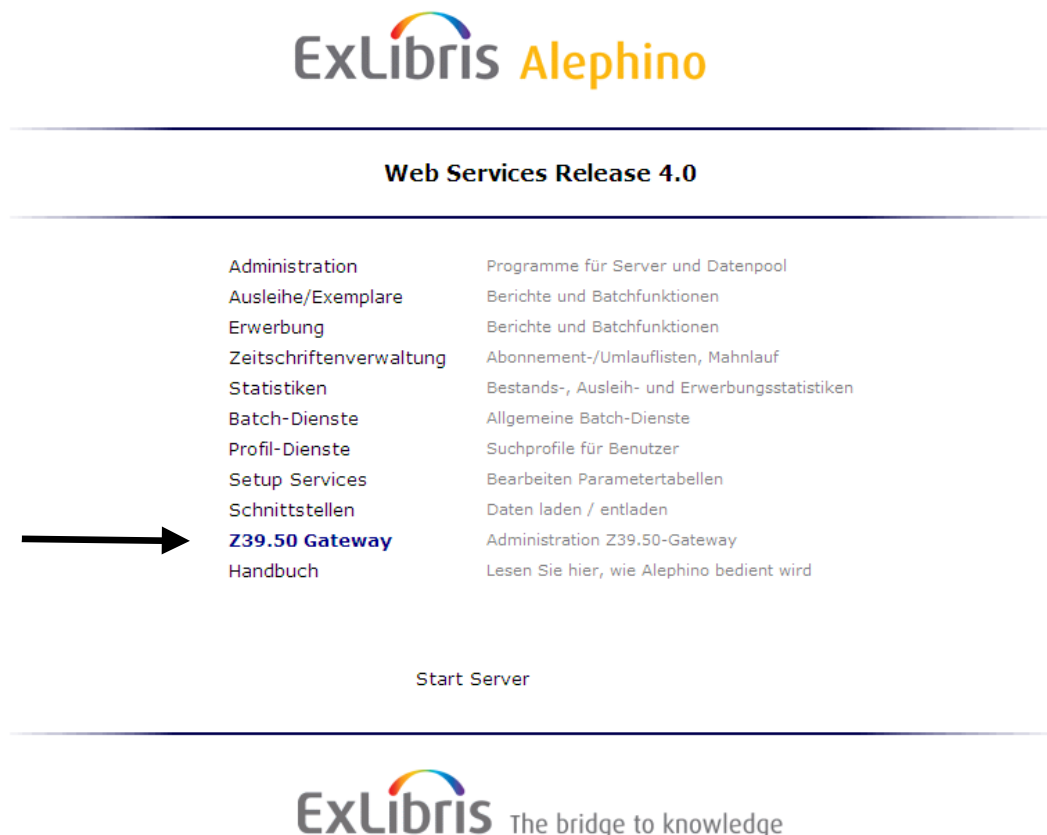
Depending on the format of the source record, when saving the record in Alephino an implicit conversion into the Alephino format takes place. Authority records for links will automatically be created. This procedure allows per "On the fly" conversion to take over

data from sources conform to MARC21 and MAB2 - if necessary after minor manual editing of the records in the cataloguing module.

3 Setup and administration

3.1 Defining and modifying a target

To define and modify a target call up the Alephino Web Service Module and select "Z39.50 Gateway":



Via the link you get to the web-based administration interface for the Z39.50 Gateway:

Select the menu "Setup Services" and then "Gateway configuration".

Z39.50 Web Services Release 4.0

Administration
Setup Services

Z39.50-Gateway Maintenance
Adjust server side parameter tables

Database:

Z39.50-Bibliotheken 

Logout
german

Z39.50-gateway configuration

Kommunikation

IP-address (hostname)

IP-connection (port)

Z39.50 Target

Library

Target

User

Pass

RecordSyntax

CCLRules

TranslIn

Timeout

Scan

Navigate

Here, you may modify all defined targets.

In the help for the input mask you will find explanations on the individual fields.

To define and modify new targets, enter the code of the new target in the input field for Library (e.g. Z-NEW) and click on „Get current values“. An empty form is displayed for specifying the parameters for the new target. With finally clicking on the disk symbol "Save", your settings will be written to the system configuration file *etc/zgate.cfg*. To activate the changes, the Alephino Z39.50 gateway must be restarted.

3.2 Setup of the Alephino clients and the Web OPAC

The Alephino Z39.50 Gateway acts from the point of view of the Alephino Windows applications and the OPAC as server. The services provided by the Gateway have to be introduced as symbolic libraries in the configuration files of the Alephino applications (search module, cataloguing, Web OPAC).

In the initial state of the Gateway configuration there is 1 symbolic library:

- Z-MRC = Z39.50 target with MARC-Format (Library of congress)

Of course, further sources may be integrated via Alephino Z39.50 Gateway.

Edit the following files in the installation directory of the Alephino clients (e.g. C:\Programme\ExLibris\Alephino_30) and add the following parameter lines as follows:

- Subdirectory *alephcom*tab file *library.ini*

```
!-----+-----+----->
Z39.50-LoC      Z-MRC      localhost:2210
Z39.50-KCL      Z-KCL      localhost:2210
```

Please note that 'localhost' may need to be replaced with the address of your server. To avoid mistakes when editing this and the following tables it is advisable to copy an existing parameter line per copy/paste as model.

- Subdirectory *alephcom*tab file *searbase.dat*

```
!!!!!!!!!!!!!!!!!!!!!!!!!!!!!!!!!!!! +!!!!!!!!!!!!!!!!!!!!!!!!!!!!!!!!!!!! +!!!!!!
Z39.50-LoC      Z-MRC      Z-MRC
Z39.50-KCL      Z-KCL      Z-KCL
```

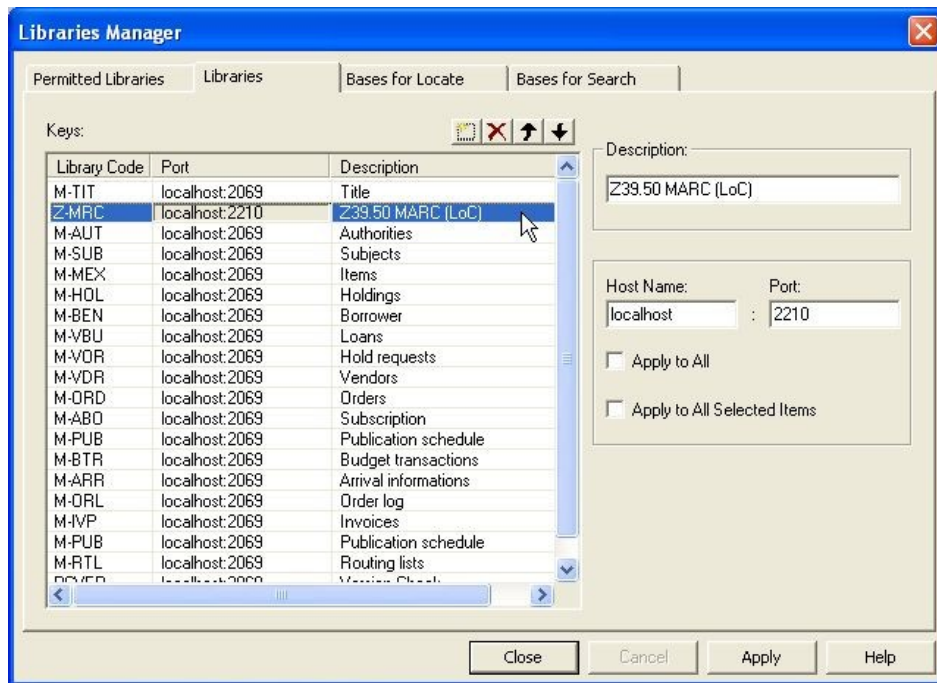
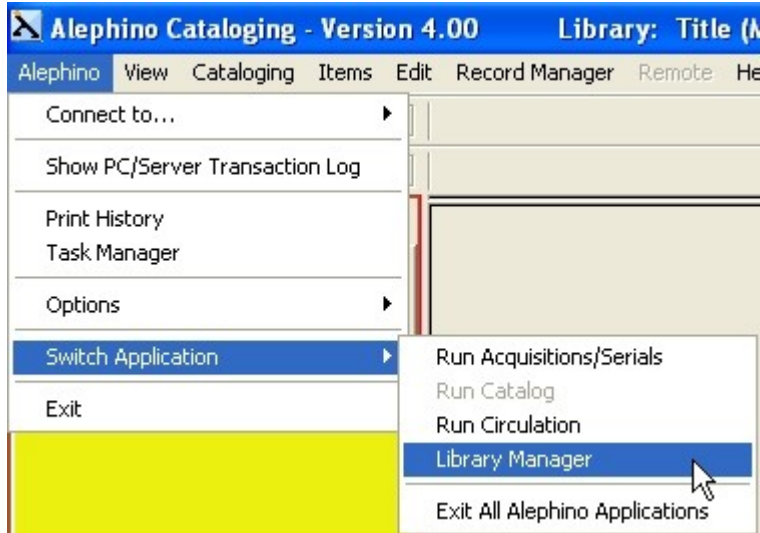
- Subdirectory *catalog*tab file *per_lib.ini*

```
Z-MRC
Z-KCL
```

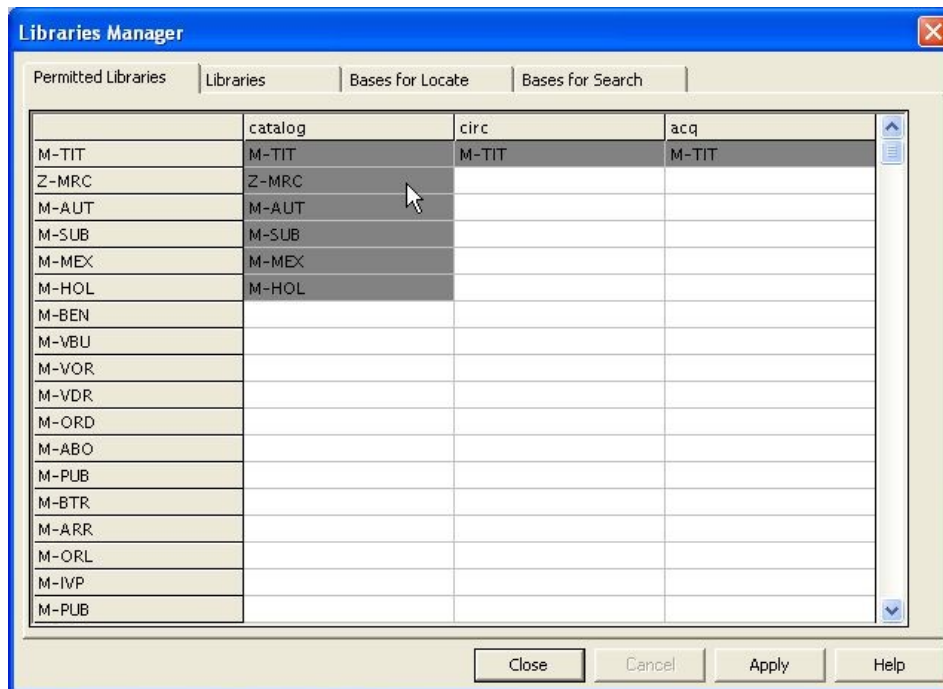
In Alephino there is a comfortable way to edit these files. Please use the *Library manager*, which is integrated in the cataloguing module, to add more databases to the configuration of your Alephino GUI applications or to delete or rename them:

1. Call up the function (Cataloging module, menu „Alephino“ / Switch Application)

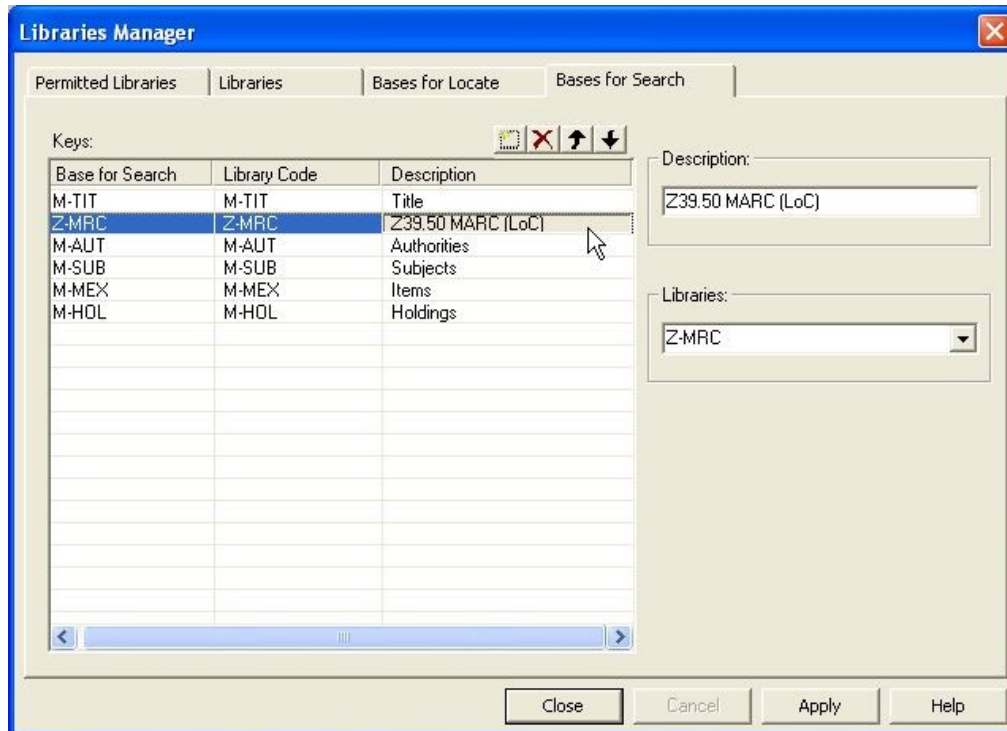
2. Add the symbolic database and its Gateway address



3. Add the symbolic database to the permitted libraries of the Cataloging module



4. Add the symbolic database to the bases available in the Search tabs



If you want to integrate the Z39.50 libraries in the database menu of the Web OPAC you must edit its configuration file *alipac.cfg* in the (server) directory *etc*:

- section (*Libraries*)

Z-MRC = localhost:2210

Z-KCL = localhost:2210

- sections (*NamesGER*) und (*NamesENG*)

Z-MRC = Z39.50-Library of Congress

Z-KCL = Z39.50-Kings College London

(Of course the names of the libraries can be chosen freely.)

3.2 Setup of the server

Editing the following server files is only necessary if you want to define new targets in addition to the existing target Z-MRC. The changes are not necessary, if you replace the existing target with another one.

Example: The Kings College London should be added. The institution provides records in the MARC format.

- Create in your Alephino installation in *../etc/client/* a file *pc_KCL.pck*. Copy the existing file *pc_MRC.pck* and rename it . In the file, the date in the first line must be changed so that the client recognizes the table as new and gets it from the server.
- Also, add in the file *../etc/z39file.ext* a corresponding line (copy the line *FILE=MRC...*) and add the parameter *FORM=MRC* in order to assign formats for printing, display and lists to the new target:

..

```
* Definition Files
*****
(zfiles)
FILE=MAB,DEFIN=011,INDEX=z39mabidx,LOCATE=mabloc
FILE=MRC,DEFIN=012,INDEX=z39mrcidx,LOCATE=mrcloc
FILE=KCL,DEFIN=012,INDEX=z39mrcidx,LOCATE=mrcloc,FORM=MRC
```

3.3 Setup of the Z39.50 server

The Alephino Z39.50-server supports the following services of the Z39.50-protocol:

- INIT (AUTH)
- SEARCH
- SCAN
- FETCH (PRESENT)
- SORT

The program is controlled by configuration file `./etc/zserver.cfg`. The basic configuration already contains all the entries needed to address the predefined Alephino-database "M-TIT" (MARC21).

In order to adress a Z39.50-source using an appropriate Z39.50-Client (BookWhere, EndNote ...) the following parameters will always be needed:

IP-address of the server (or DNS name respectively)

The port number (Communication)
Port = **2010**

The database name (Libraries)
TEST = M-TIT

If a user authorization should happen, additionally:

User name (Communication)
User = **Z39**
Password
Pass = **Z39**

4 Appendix A: Selected access information

Please note, that the access may be customer-specific and not free of charge, i.e. user/password may be need to be asked for at the institutions. There is no warranty for the validity of the following.

----- Extract from zgate.cfg -----

*

* **Kings College London**

*

(Z-KCL)

Target = library.kcl.ac.uk:9929/KCL01

CCLRules = ../etc/marclib.ccl

RecordSyntax = MARC

TranslIn =

Timeout =

*

* **Library of Congress (no SCAN)**

*

(Z-MRC)

Target = z3950.loc.gov:7090/VOYAGER

CCLRules = ../etc/marclib.ccl

RecordSyntax = MARC

TranslIn = marctoext

Timeout =

*

* **Glasgow University**

*

(Z-GLA)

Target = eleanor.lib.gla.ac.uk:210/innopac

CCLRules = ../etc/marclib.ccl

RecordSyntax = MARC

TranslIn = marctoext

Timeout =

*

* **NEBIS Switzerland**

*

(Z-NEB)

Target = opac.nebis.ch:9909/NEBIS

CCLRules = ../etc/marclib.ccl

TranslIn = marctoext

RecordSyntax = MARC

```
Timeout =  
*  
* HeBIS Frankfurt/Main  
*  
(Z-HEB)  
Target = tolk.hebis.de:20210/hebis  
CCLRules = ../etc/marclib.ccl  
TranslIn = marctoext  
RecordSyntax = MARC  
User = 3950  
Pass = Z3950  
Timeout =  
*
```

In addition, we would like to recommend the following link (the most extensive resource on Z39.50 targets world wide): <http://targettest.indexdata.com/>