

# campusM Roadmap 2019

December 2018

# PRODUCT VISION

PERSONAL, STUDENT-CENTERED EXPERIENCE

INTEGRATED, CONNECTED EXPERIENCE

COMMUNICATION & ENGAGEMENT PLATFORM

RESILIENT & SECURE

SIMPLE & EMPOWERING TO USE AND ADMIN

RELEVANT & SIGNIFICANT



# 2018 IN SUMMARY

# 2018 In Summary



Monthly  
Releases



Preview  
Environment



Blended  
Calendar



Map  
Localization



Insight  
API



Custom OBI  
Reporting



Personalized  
Notifications



App Manager  
Enhancements



React 16  
Update

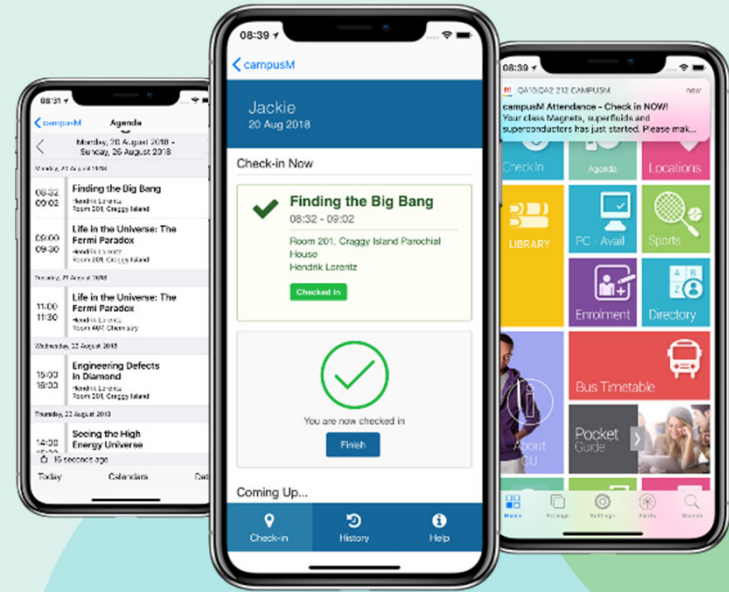


# TOP INITIATIVES

# campusM Attendance

## Simplifying classroom attendance tracking.

An end-to-end solution for tracking user's attendance while allowing the university to comply with local regulations and leverage insightful analytics to deliver constructive intervention for student success and engagement initiatives.



# campusM Attendance: Summary



## **SIMPLE TO USE**

Real-time  
deployment

Highly Configurable

No hardware or equipment  
installation

Minimal classroom disruption



## **CONNECTED EXPERIENCE**

Works off any device

Part of the main university app

Connected to the Student  
Information System

Used by all university  
stakeholders



## **COST EFFECTIVE**

Included in your campusM  
subscription

One-time implementation fee

Minimal ongoing maintenance

# Creative Studio

## Build Engaging Content in Minutes.

Delivering class leading content creation tools enabling customers to grab and engage their users

Use mobile technologies to reach out and involve your students in new ways, to provide personalized targeted information in new and innovative ways



# Build Engaging Content in Minutes

## CONTENT-READY

Working with your existing content pages

## RESPONSIVE

Works on mobile, tablet and desktop devices

## FEATURE-RICH

Supports ready to use template, design classes, review modes and more

## DRAG-N-DROP

Large number of delivered drag-n-drop elements

The screenshot displays the 'App Manager Creative Studio' interface. At the top, there's a navigation bar with 'App Manager Creative Studio' on the left and 'Admin BigSkyU' on the right. Below the navigation bar is a toolbar with various icons for editing and design. The main workspace is divided into three sections: a left sidebar with 'Menu Options' and a search bar, a central content editor, and a right sidebar with 'Layout' and 'Basic' options. The central content editor shows a red header 'End of Year Celebration' above a photo of graduates, followed by the text 'Join us on December 8th, 2018'. The right sidebar contains a grid of drag-and-drop elements like Text, Link, Image, Map, Link Block, Quote, and Text section.

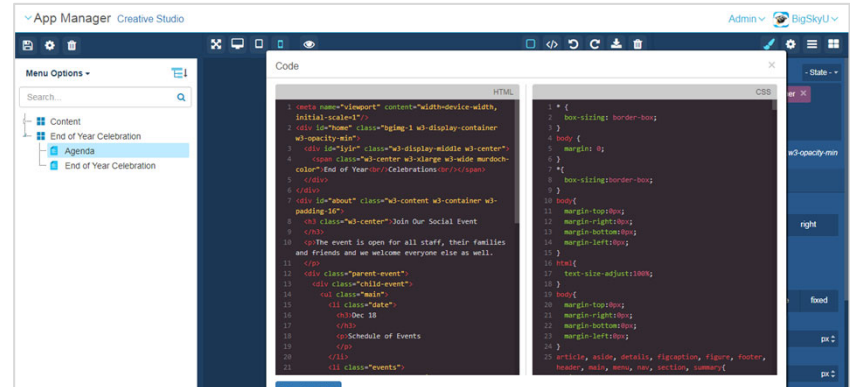
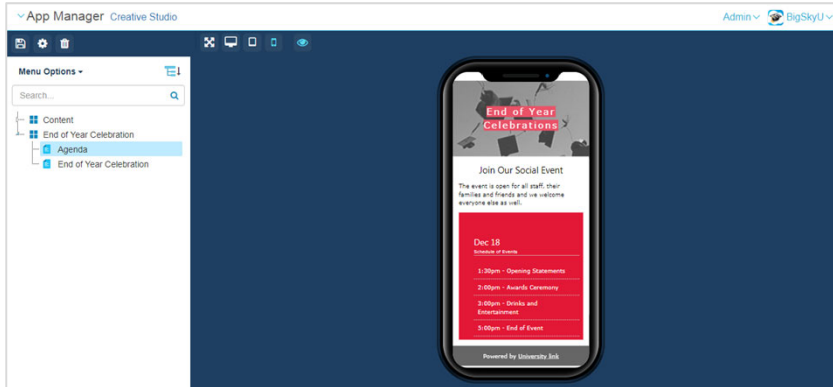
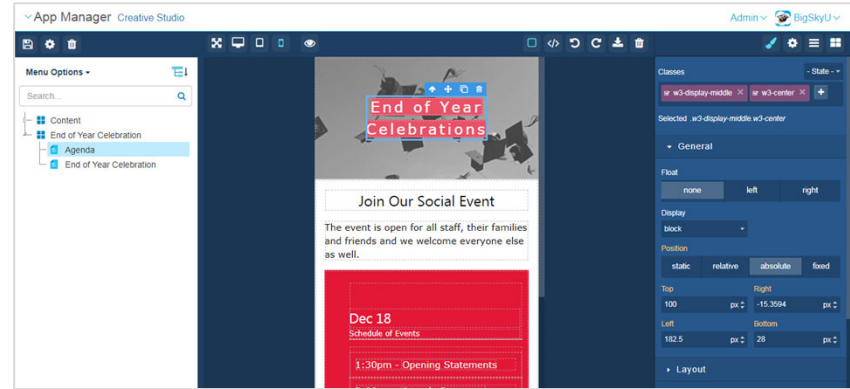
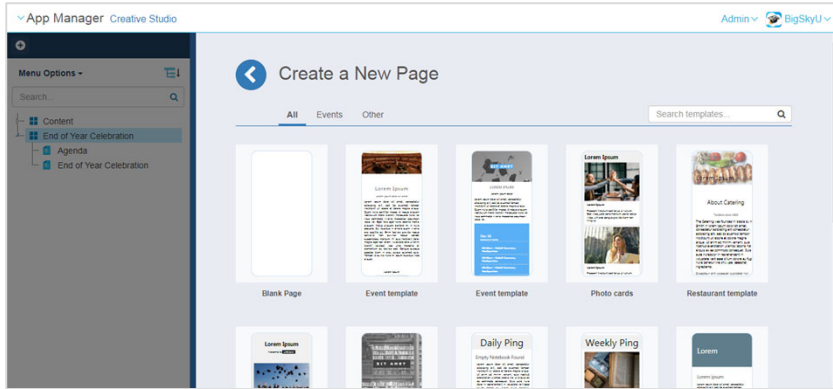
## SIMPLE INTERFACE

In screen editing and design in a Simple, intuitive interface

## INTEGRATED

Built into the campusM App Manager

# Sample Screenshots



# Creative Studio



## **SIMPLE TO USE**

Self-service interface

Integrated with existing campusM  
pages and works on any browser



## **AVAILABLE TO ALL**

The user interface is available to  
all permitted users

Limited to users' roles and  
permissions



## **INTUITIVE DESIGN**

Start the design by using  
responsive templates, reducing  
the time to delivery

Provided in a simple drag-n-drop,  
in-screen editing interface that  
does not need any technical  
resources

# Integrated Campus (IaaP)

## Transforming Your Campus Systems to a Personalized Mobile Experience.

Deliver the most extensive and comprehensive integrations to ensure the product is well embedded in the institutions eco-system.

Integrations should be deployed in a self-service mode with configurations options.



# Integrated Campus (IaaSP)



## **SIMPLE TO DEPLOY**

Configured using the App  
Manager

Included in the monthly releases  
(updates, new features instantly  
available to all customers)

Minimal technical skills required



## **EXTENDABLE ENVIRONMENT**

Out-of-the-box integration  
standard with a diverse set of  
campus systems (SIS, LMS/VLE,  
Library, PC Availability, etc.)

AEK and CLEK to support  
institution-specific integrations



## **MIGRATION PATH**

Available to all customers as part  
of their campusM subscription

May require initial one-time  
setup fees to transition  
authentication and existing  
services



# 2019 KEY DEVELOPMENTS

# Enhanced Portal Interface

**Interface enhancements to provide a easier menu and breadcrumbs navigational experience for the campusM Web App**

- Collapsible left hand side navigation element
- Navigational Bread Crumbs
- Full screen AEK
- Configurable within App Manager




# Sample Screenshots

My Screen

ExLibris campusM

Home / My Profile

Home > Personal Details 

My Profile > Review your personal details, and update your e-mail and contact address. [Edit this Form](#)

My Units >

Learning Resources >

Latest News >

Get Help >

What's On >

Library >

Services >

Social >

Maps >

Emergency >

Search Murdoch >

<b>Student ID</b>	<b>E-mail Address</b>
32110904	simonb@murdoch.edu.au
<b>Full Name</b>	<b>Provided E-mail Address</b>
Simon Bonds	32110904@student.murdoch.edu.au
<b>Date of Birth</b>	<b>Telephone</b>
05/06/1986	-
	<b>Postal Address</b>
	Bas Callista Team ECL 4.058 MURDOCH WA, 6150 AUSTRALIA

# Notification Center

**Consolidating notification toolset  
leveraging powerful app notifications  
along with engagement actions to make  
sure your message gets across**

- Notification history
- Read/unread metrics
- Advanced personalized messaging
- Scheduled and expired notifications



# Enhanced Analytics

**Provide enhanced insight into how students use the app and their levels of engagement, all through our powerful Oracle Business Objects analytics platform**

- Role-based analytics
- Session time feedback
- Active and inactive segmentation



# Connect Layer Extension Kit

## Create your own services on the campusM Connect Layer

- Use existing infrastructure to access on premise services
- Secure and authenticated
- Web based interface to configure and manage custom services



# Live Tile Development Kit

**Development kit enabling customers to create attention grabbing live tiles, delivering key information at a glance right in the app homescreen**

- ReactJS based development kit
- Boiler plates get you started
- Utilizes familiar AEK mechanisms to manage creation and deployment



# Token-Based Authentication

**Transformation of campusM authentication mechanisms allowing for simple and secure single sign on experience on native and web**

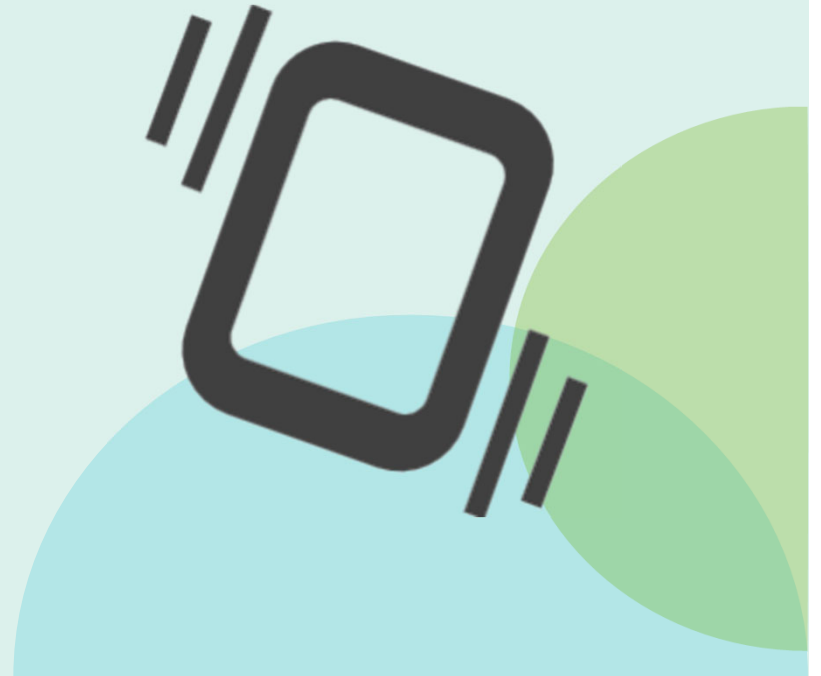
- Token based authentication
- SAML support
- OAuth2 compliant



# AEK Native

**Use native functions and features to enhance your AEK experiences and open up new opportunities to engage students**

- AEK – Native middleware layer
- Create interactions using native functions
- GPS, Speed, Direction  
iBeacons, Bluetooth  
Camera





Thank you!

[matthew.sherlock@exlibrisgroup.com](mailto:matthew.sherlock@exlibrisgroup.com)