



2026 Roadmap Highlights

campusM

H1 Update



2025 Wrapped!

2025 - Wrapped!

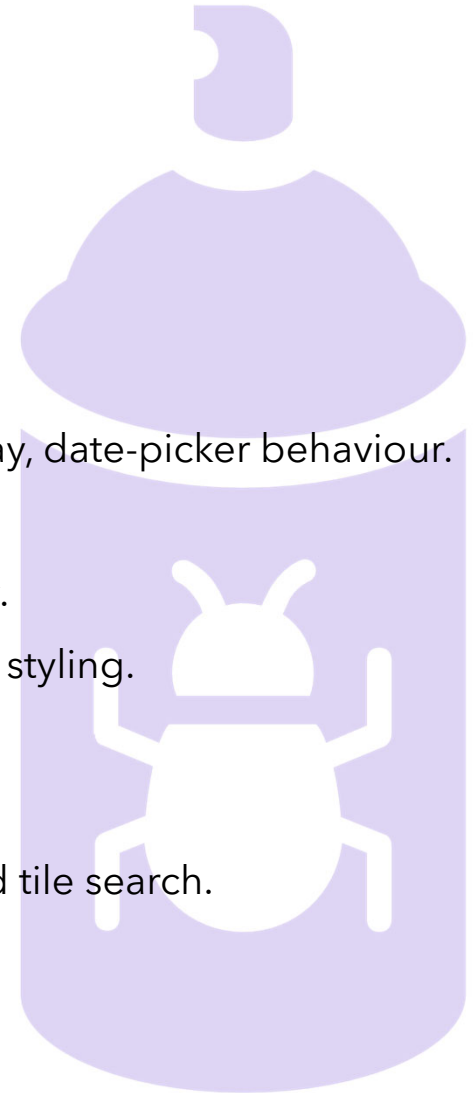
Area / Module	New Capabilities	Why It Matters
Calendar / Events	Endless scrolling in agenda view • Support for all-day & multi-day events • Configurable default notifications • Add to device calendar • Web app now displays events	More flexibility & control, better user alignment across platforms
App & App Builder / UI / UX	Improved App Manager UI • Deep link support • Splash screen support (iOS) • UX enhancements in tile creation & lists • Increased admin session timeout	Better admin experience, stronger branding, more direct engagement paths
Alerts & Notifications	Bulk select / multi-alert actions (web & mobile) • Advanced role-based notification filter ("Only")	Easier management, more targeted communication
Maps / Location Services	Floor plan display (interior maps) • PC-availability overlays on maps	Richer spatial awareness, better on-campus navigation
Product Integrations	Self-Checkout (library) • Newsfeed (RSS / API feeds) • Slimmer UI for PrimoVE integration	More functionality in one app, integration of core campus services
Login / Authentication / Branding	Logo on "Select Profile" page	Stronger institutional identity and better user experience
Analytics / Insights	Page views / tile use by user role • Out-of-box reports by role	Data-driven optimization of homepage, content, and features

2025 - Bugs Crushed

Over 100 Bugs crushed this year

Where we fixed things most:

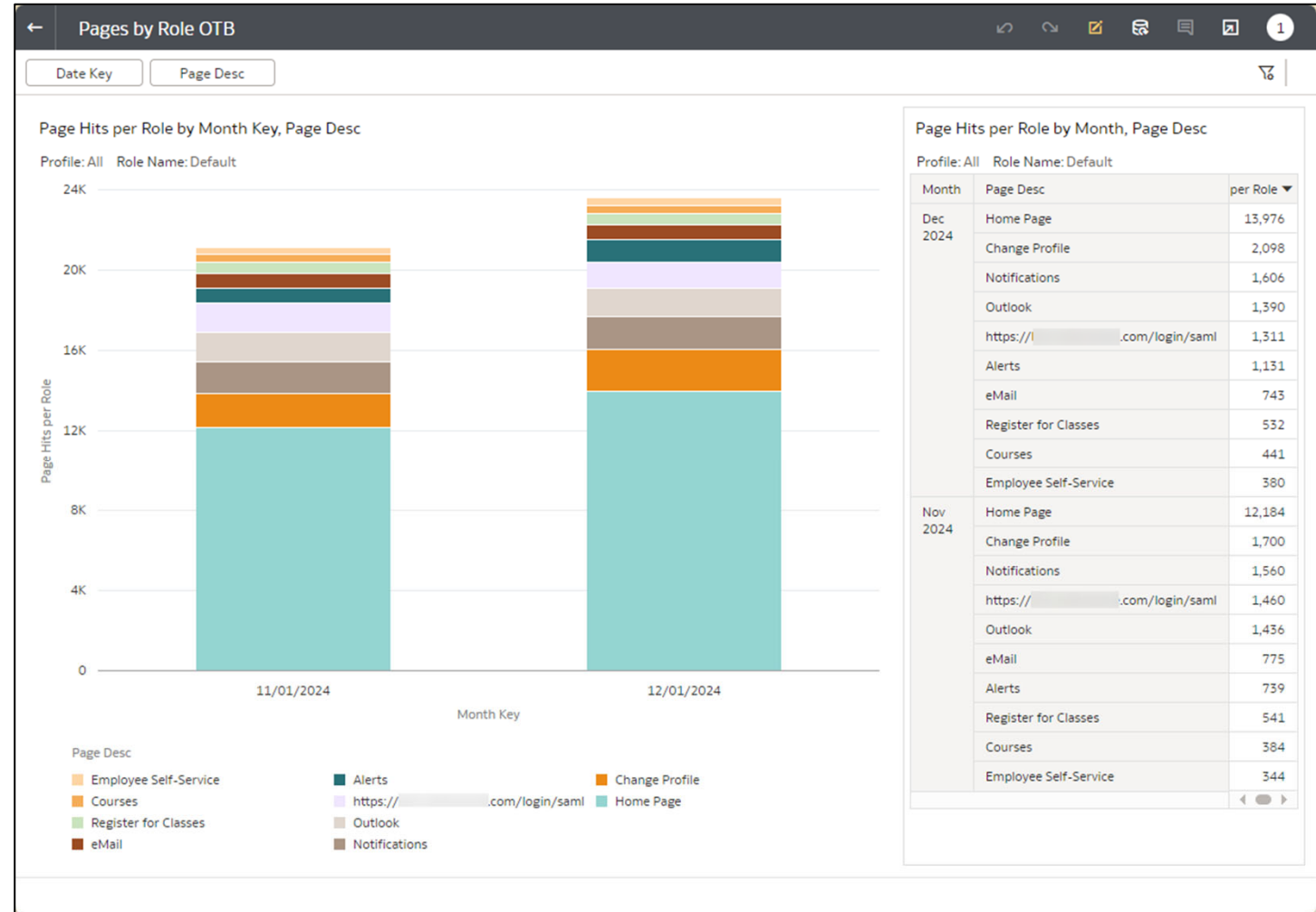
- **UI/UX & Accessibility:** Web/iOS/Android polish, WCAG 2.2 contrast & screen-reader fixes.
- **Calendar & Events:** All-day/multi-day support refinements, reminders, agenda/timeline display, date-picker behaviour.
- **Notifications & Alerts:** Read-state reliability, opening to correct pages, bulk actions.
- **Authentication / Sessions:** SSO/logout handling, profile switching, guest registration security.
- **Integrations:** ID Card (Apple Wallet), Leganto, Newsfeed, Library Self-Checkout, Primo VE link styling.
- **Maps / Location:** Initial zoom behaviour, map action links.
- **Analytics:** Banner tile click analytics accuracy.
- **AEK / React Native platform:** Back-button/nav fixes, image picker, timeline open time, nested tile search.



February 2025 - Analytics by Roles



- These new subject areas enable you to break down data about tile clicks and page hits by user roles.
- This can indicate which tiles are most useful to users of different types.



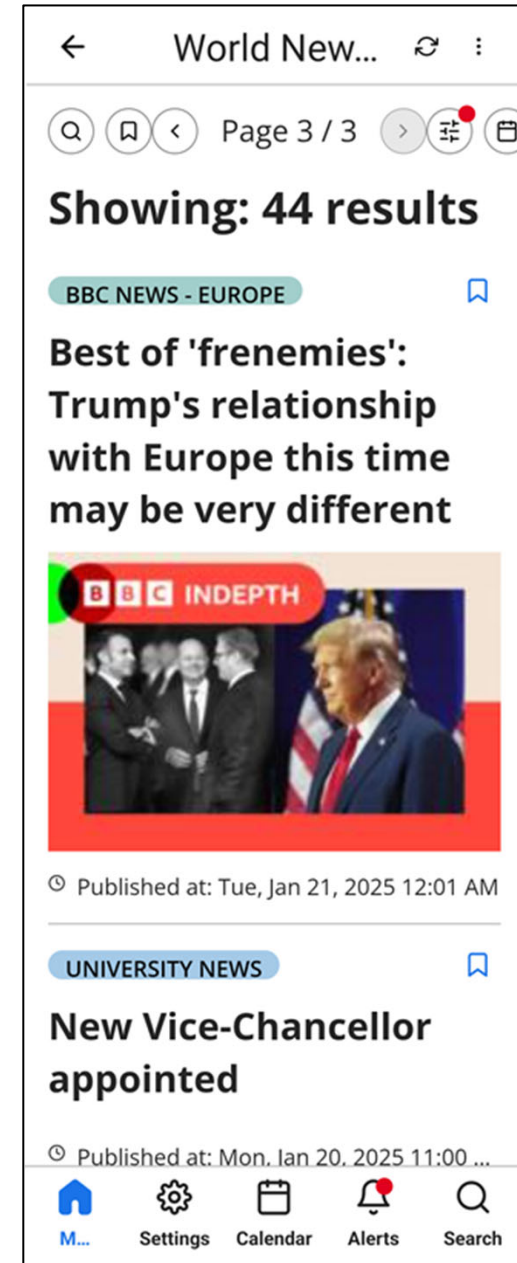
March 2025 - Newsfeed Product Integration

This feature allows you to add one or more feeds (RSS or API) to a Newsfeed page.

The main page of the Newsfeed UI displays the headlines of the items and an image. Users can select these items to view their full content.

Feeds can be filtered by the end-user to limit the display to selected feeds, view items from preceding days, to save favorites, and to search for items whose titles and authors' names contain a specified string of text.

Feeds are updated automatically every five minutes, so they are always kept up to date.



April 2025 - Web Calendar, now with Events!

Aligning the behaviors across our platforms, events from both Timetable and the Events Product Integrations now appear on the web calendar.

Home / Calendar

February, 2025

Mon	Tue	Wed	Thu	Fri	Sat	Sun	Friday, 14 February 2025
27	12:57 ... 28 12:57 ...	29	30	12:00 ... 31 15:00 ... 17:00 Energ... 19:00 Sum...	1	2	10:00 - 11:00 LHC and the Early Universe Cesar-Francois Cassini de Thury Juan Suite Meeting URL Exists
3	4	5	6	11:00 N... 7 13:00 Vi... 13:00 Laser... 14:00 Soun... 16:00 Sum...	8	9	11:00 - 12:00 Linear Algebra Midterm Louis Receveur EXI Office
10	11	11:00 I... 12 12:00 ... 12:15 Being... 12:30 Wher... 12:45 MindT... 4 more...	17:26 ... 13 17:29 ... 17:33 The B...	10:00 ... 14 11:00 ... 14:00 Visit t...	15	10:00 ... 16	14:00 - 15:30 Visit the New Art Center Dr Peter Artedi Matt's House
09:00 ... 17	18	19	13:00 ... 20 13:30 ... 15:00 Nano... 17:00 Gravit... 17:10 Mana... 6 more...	21	22	23	
12:00 ... 24 14:00 ... 17:00 3D bi...	25	13:30 ... 26 16:30 ... 17:00 Galax...	27	28	1	2	

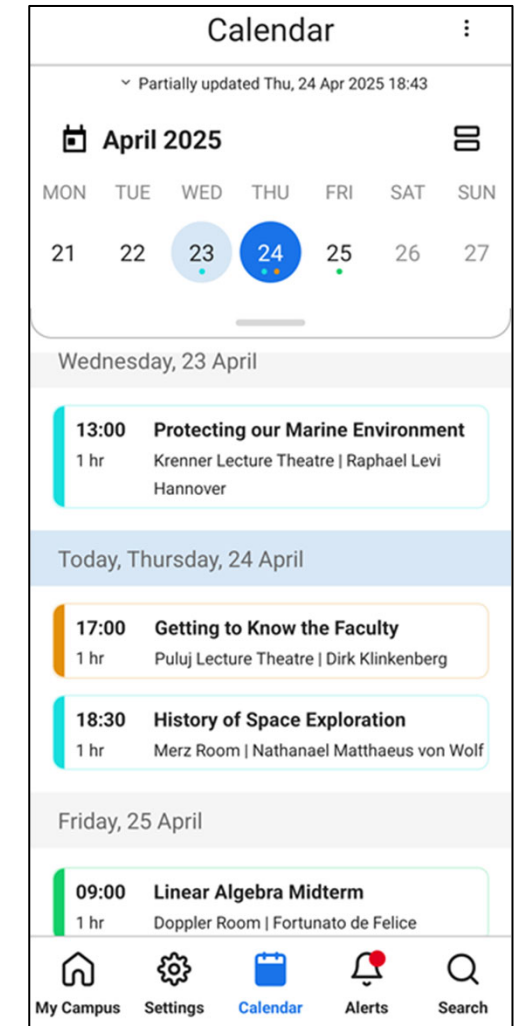
Calendars Week View

June 2025 - Endless Scroll

End-users can now scroll up and down through days in the Agenda view in order to view several days' events easily.

The day displaying is reflected in the top date bar as well, which has been altered to provide more vertical space without sacrificing usability.

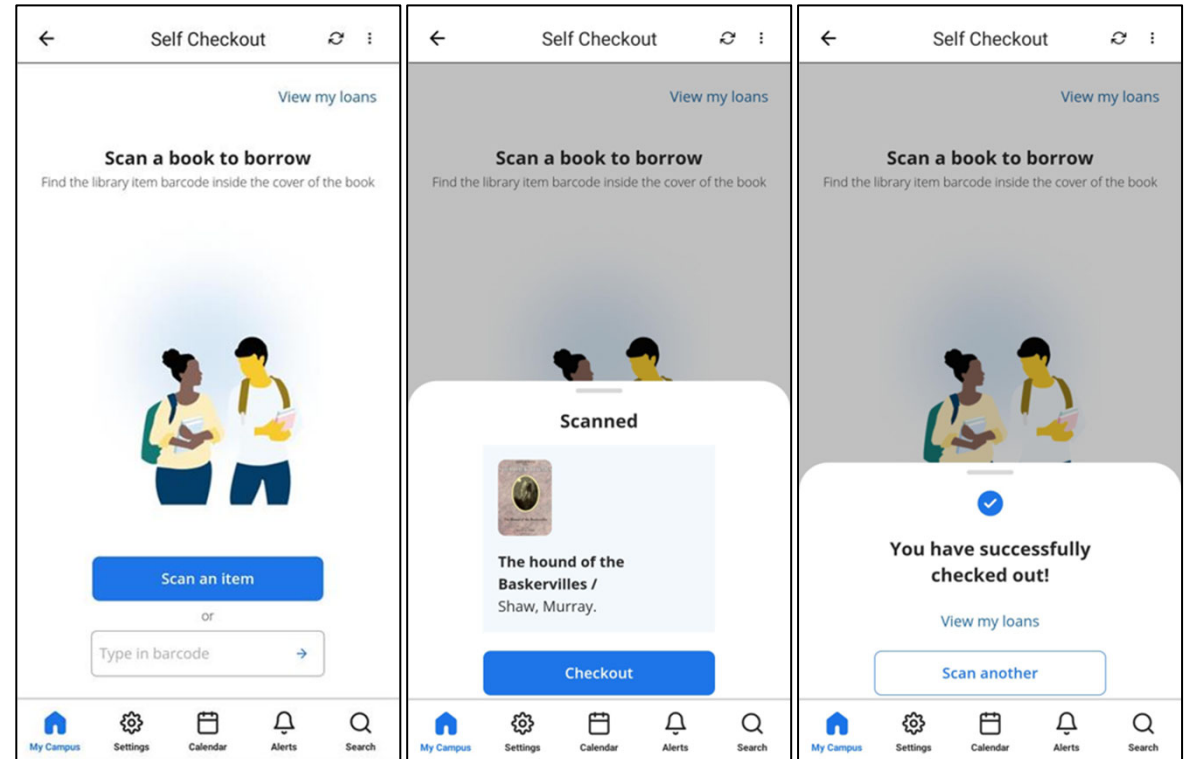
Community-Driven
Development



August: Self Check-out

Replace costly self-checkout machines and with the phone your patron already has in their hand:

- Scan Item Barcode with mobile camera
- Check out Item at the touch of a button according to the Item's Terms of Use as configured in Alma
- See current loans



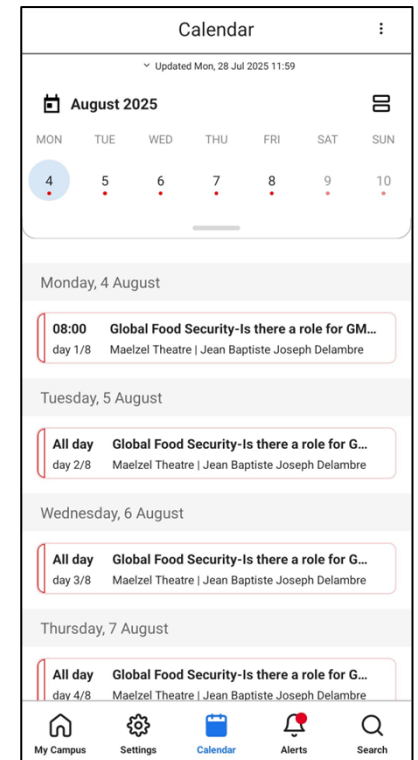
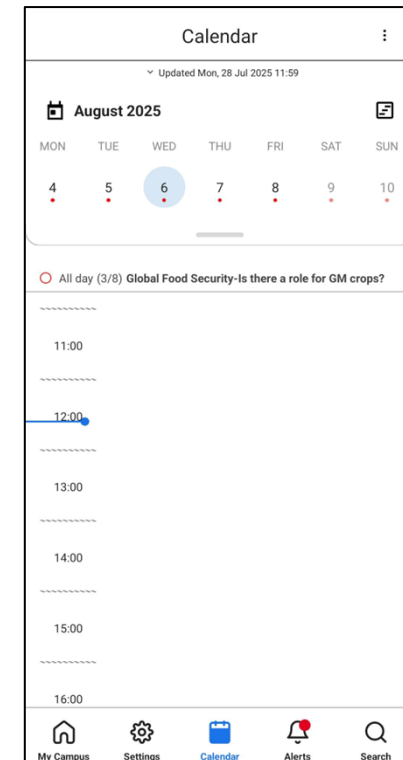
September: Support All Day Events

Community-Driven
Development



Students and staff can now see events that span multiple days displayed clearly in their campusM calendar, making planning easier and more accurate.

- Supports events from Outlook and RESTful API Timetable PIs.
- Works seamlessly with Events PI, regardless of vendor.
- Ensures that long-running events (e.g., conferences, exams, induction weeks) are shown properly.
- Improves clarity for students and administrators managing extended activities.



November: Deep Linking into the app

**Community-Driven
Development**



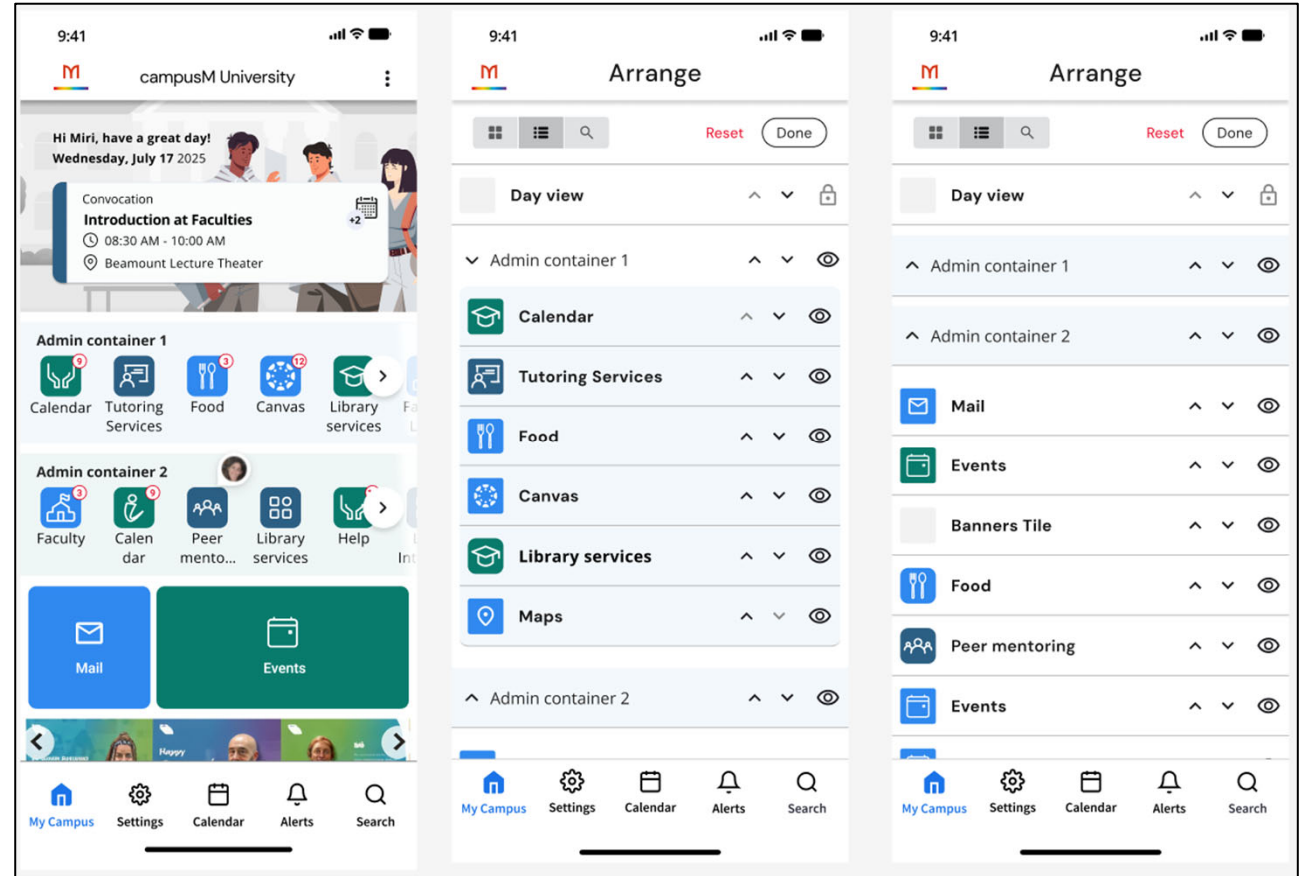
Deep linking makes it simple to take users straight to the right place in the app, improving engagement and reducing friction.

- Send students directly to their timetable, calendar, or events with a single click.
- Share links in emails, QR codes, or web pages to highlight key content.
- Drive adoption of features like Maps, Feedback, or custom AEK services.
- Automatically open in the browser if the app isn't installed, ensuring no dead ends.

December: Tile Containers

Tile Containers give institutions and students more flexibility in how information is organized and displayed in the app, while keeping the look and feel consistent with institutional branding.

- Administrators can set tile size, color, and labels to align with branding.
- Sub-tiles now display notification badges, helping users spot updates at a glance.
- Provides a cleaner, more engaging homepage with structured navigation.
- New analytics field to be added in January 2026 to provide insights into usage and behaviour.

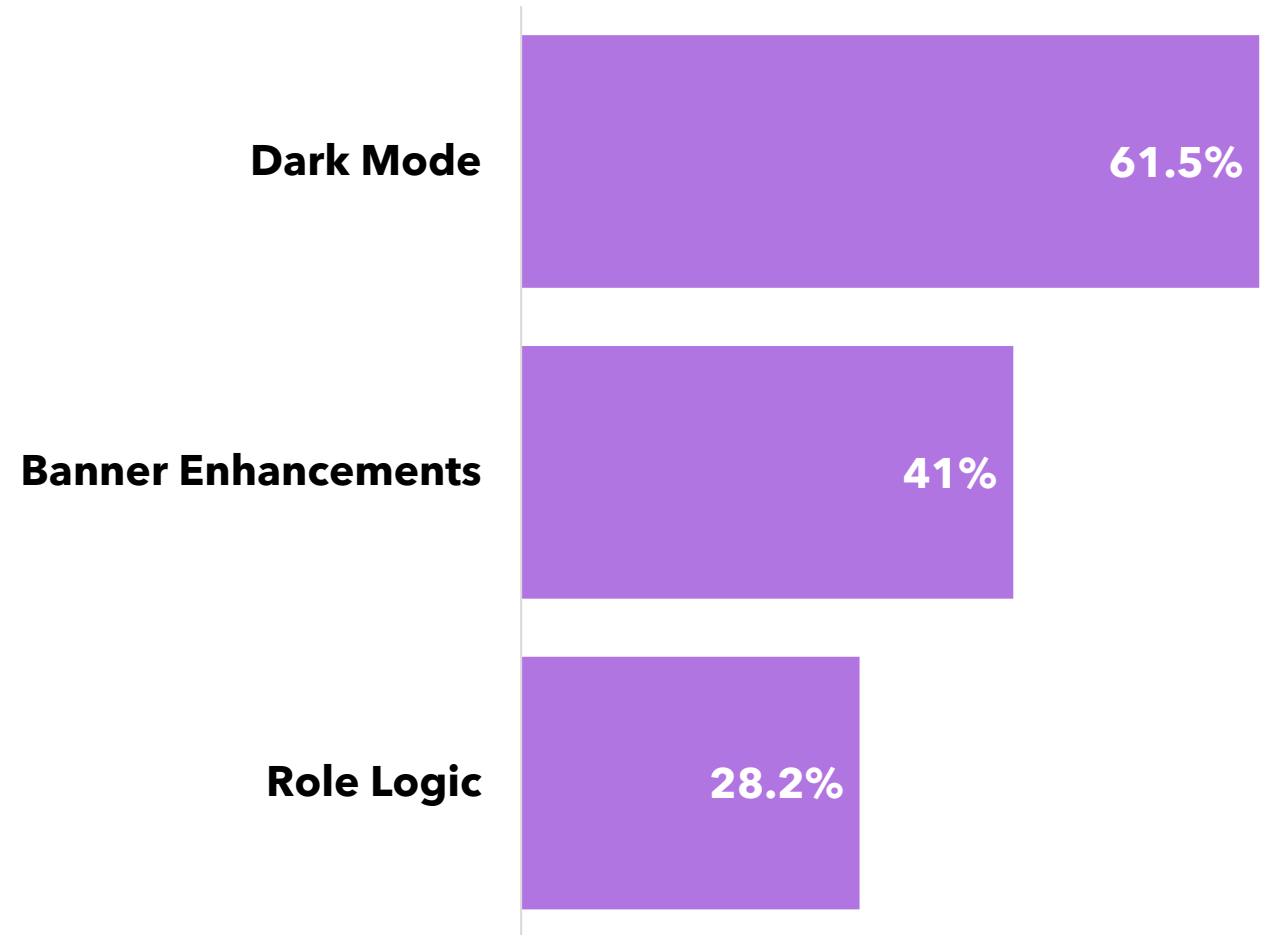




Roadmap 2026

Focusing in on What YOU Want

- When we asked you for your top 3 features, you responded:
- And so that's what we plan to do!
- Other notable mentions:
 - Notification Analytics
 - Personalisation of Events PI



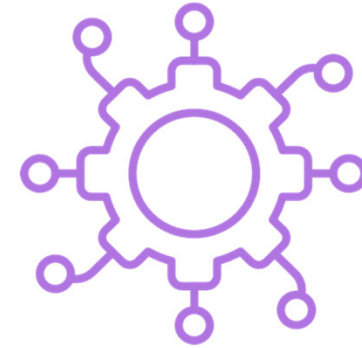
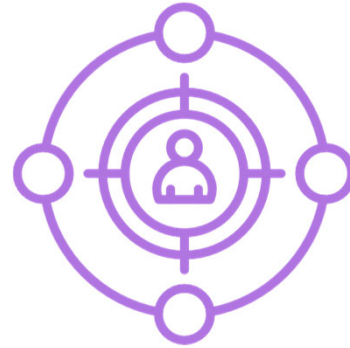
Focusing in on What YOUR STUDENTS Want

- **79.5%** of students indicated having some difficulty getting organized regarding their studies – so we dug deeper.
- We want to make the logistics of higher education:
 - More **ACCESSIBLE**
 - **LESS** overwhelming
 - More **ACHIEVABLE**

Statement	Response
It would help me to see due-dates for my academic assignments on the app's Calendar.	<ul style="list-style-type: none"> ● 1 - Completely Disagree 2.9% ● 2 - Mostly Disagree 1.5% ● 4 - Neutral 11.8% ● 5 - Slightly Agree 8.8% ● 6 - Mostly Agree 20.6% ● 7 - Completely Agree 54.4%
It would help me to plan my study-time by creating events on the app's Calendar.	<ul style="list-style-type: none"> ● 1 - Completely Disagree 4.3% ● 2 - Mostly Disagree 2.9% ● 3- Slightly Disagree 2.9% ● 4 - Neutral 18.8% ● 5 - Slightly Agree 14.5% ● 6 - Mostly Agree 18.8% ● 7 - Completely Agree 37.7%
I wish the app had a built-in to-do list of my academic tasks.	<ul style="list-style-type: none"> ● 1 - Completely Disagree 5.9% ● 3- Slightly Disagree 1.5% ● 4 - Neutral 20.6% ● 5 - Slightly Agree 19.1% ● 6 - Mostly Agree 17.6% ● 7 - Completely Agree 35.3%

2026 and beyond

Our development themes goes beyond delivering features.



Smarter Student Experiences

Helping students plan, stay on track, and succeed by unifying tasks, deadlines, and personal study support

Personalized & Relevant Experiences

Creating tailored experiences with relevant content, personalization, and engagement tools

Integrated and Inclusive Experiences

Connecting every aspect of campus life into one experience that's accessible, supportive, and inclusive for all students.



Smarter Student Experiences

Helping students plan, stay on track, and succeed by unifying tasks, deadlines, and personal study support

Task Board UX Improvements

Q1-4

What's coming:

- Integrating the Task Board into the campusM Calendar, to align task management with our most used feature.
- Reminder notifications and alerts for new tasks.
- Analytics on engagement and task completion.

Impact for you:

- **For students:** A seamless, easy-to-use task and planner experience that helps them stay on track
- **For institutions:** Insight into student engagement and confidence that assigned tasks are completed
- **For staff:** Better visibility of student progress and support needs through analytics.



Calendar with LMS & Reading List Due Dates

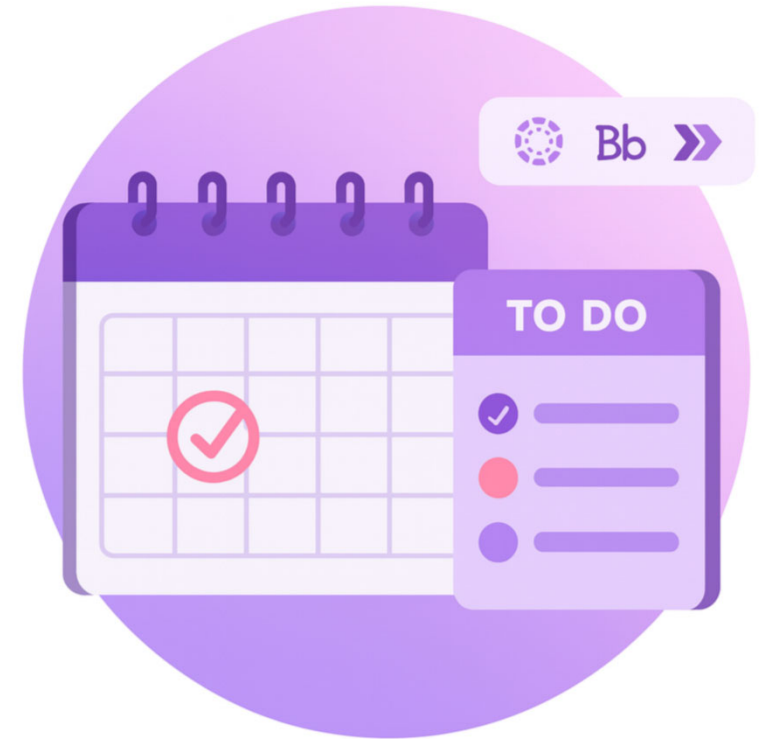
Q2

What's coming:

- Integration with Canvas, Blackboard and Leganto to pull assignment and reading deadlines.
- Due dates displayed directly in the campusM calendar, alongside timetable entries.
- Automatic updates if staff change deadlines in the LMS or reading lists.

Impact for you:

- **For students:** A single view of their academic life - no more toggling between multiple systems.
- **For institutions:** Helps improve your students time management, reduces late submissions, and enhances student satisfaction.
- **For teachers:** Less student confusion, fewer deadline-related queries.



AI Time Management Assistant

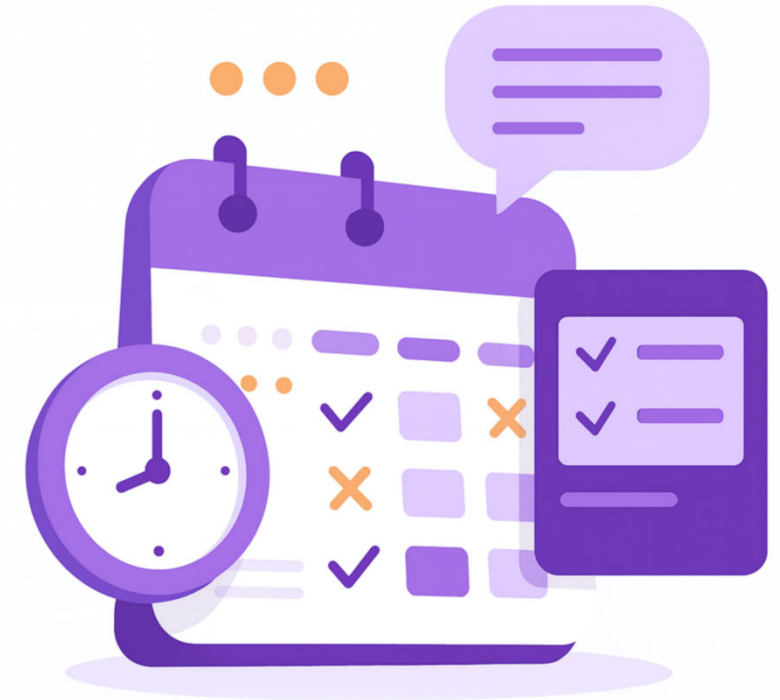
Q2

What's coming:

- A proactive AI driven assistant that helps student manage their assessments and assignment in their busy schedules
- Suggests times in their calendar to study, complete tasks, or read.
- Can break large assignments into manageable stages.
- Students choose how much support they want (or turn it off).

Impact for you:

- **For students:** Builds positive study habits and reduces last-minute stress.
- **For institutions:** Drives student retention and attainment by supporting better workload planning.
- **For staff:** Reinforces academic advice with automated reminders.





Personalised & Relevant Experiences

Creating tailored experiences with relevant content, personalization,
and engagement tools

Favorites Container

Q1

Community-Driven
Development



What's coming:

- A 'Favorites' tile on the homepage where students can pin their most-used services.
- Quick and easy action to add/remove favorites from within Arrange mode.
- Role-aware: respects existing app permissions.

Impact for you:

- **For students:** A personalized, faster route to the services they care about most
- **For institutions:** Balances student choice with institutional consistency.
- **For admins:** Reduces frustration, increases app adoption, and surfaces valuable engagement data.



Banner Tile Enhancements

Q2

Community-Driven
Development

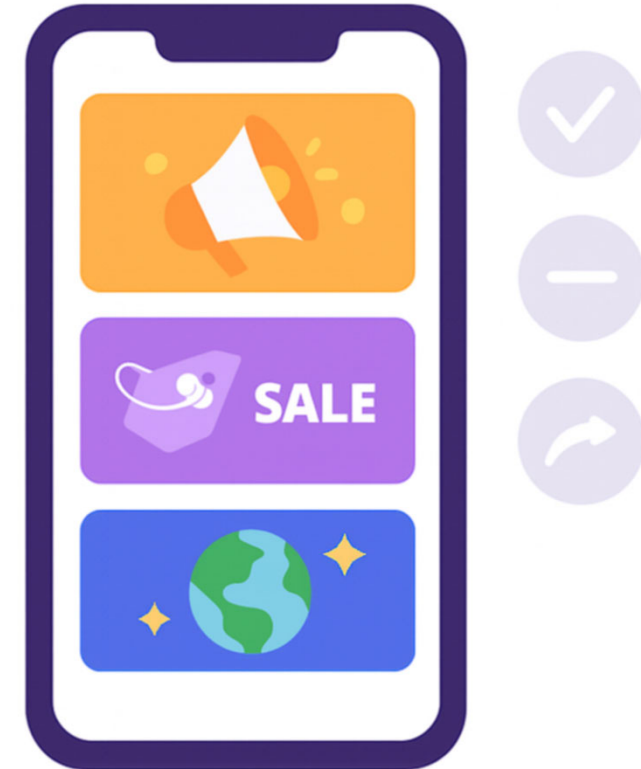


What's coming:

- Randomized banner ordering to keep your app looking fresh.
- Role- and tag-based targeting so students see the right banners.
- Automatic start and end dates for campaign scheduling.
- Swipeable banners on mobile for intuitive banner interactions
- **Head start:** Easy Banner reordering already in production!

Impact for you:

- **For administrators:** Smarter campaign management with less manual work.
- **For institutions:** Deliver more relevant and engaging banner campaigns.
- **For students:** Timely and personalized communications, not spam.



Events PI Personalization

Q3

What's coming:

- Role- and tag-based event visibility and recommendations.
- Recommended events highlighted in the UI to drive engagement
- Filter by 'recommended for me.'

Impact for you:

- **For students:** Easier discovery of relevant events.
- **For institutions:** Better event attendance through targeted promotion.
- **For admins:** Flexible setup that supports both broad and niche events.

Community-Driven
Development



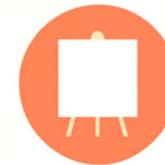
Recommended for me

FOR YOU



DEBATE CLUB

7:30 PM



POSTER SESSION

5 PM



MOVIE NIGHT!

6 PM

Role Logic

Q4

Community-Driven
Development

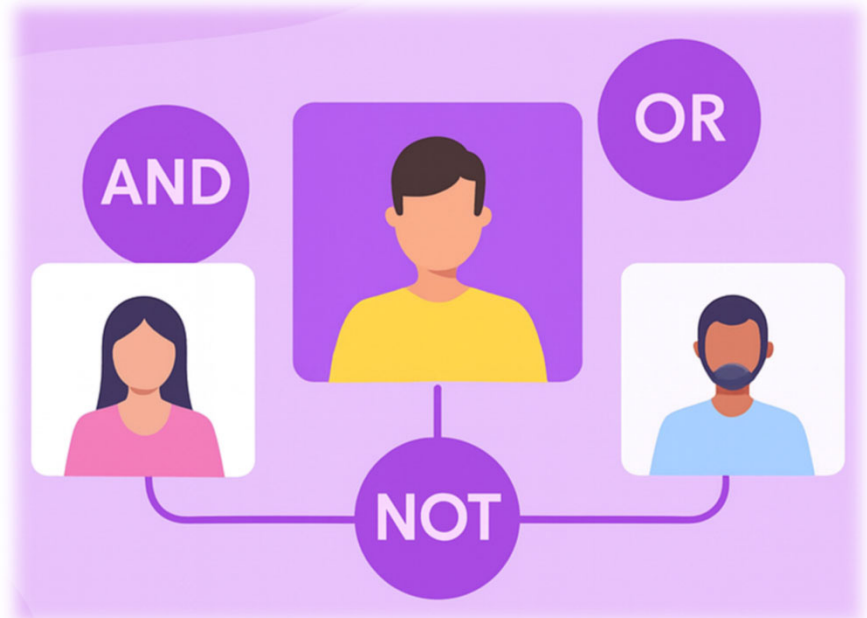


What's coming:

- Ability to define new roles based on logic between existing ones - without help from IT.
- AND, OR, NOT, XOR logic.

Impact for you:

- **For students:** Even better personalisation.
- **For institutions:** Ability to target exactly the right audience and improve engagement.
- **For admins:** Easy implementation and maintenance - no IT required!





Integrated and Inclusive

Connecting every aspect of campus life into one experience that's accessible, supportive, and inclusive for all students.

Notification Analytics

Q1

Community-Driven
Development



What's coming:

- A dedicated analytics view for campusM Push Notifications, based on our existing Alert Center data.
- Pre-built dashboards showing open rates, click-throughs, and engagement.
- Ability to compare notification engagement performance over time.

Impact for you:

- **For students:** Better targeted communications that keep them engaged.
- **For administrators:** Clear insight into communication performance, enabling smarter messaging strategies.
- **For institutions:** Evidence-based reporting that demonstrates ROI and supports continuous improvement.



Outlook Product Integration Overhaul

Q2

Community-Driven
Development



What's coming:

- A completely redesigned UI for the Outlook Product Integration.
- Cleaner, more modern design aligned with the rest of campusM.
- Intuitive layout for reading, composing, and managing mail.
- Improved performance and resilience for user inbox.

Impact for you:

- **For students and staff:** Seamless, familiar experience that keeps communications centralised in one app.
- **For institutions:** Improves satisfaction by modernising one of the most-used integrations.



AI Integration

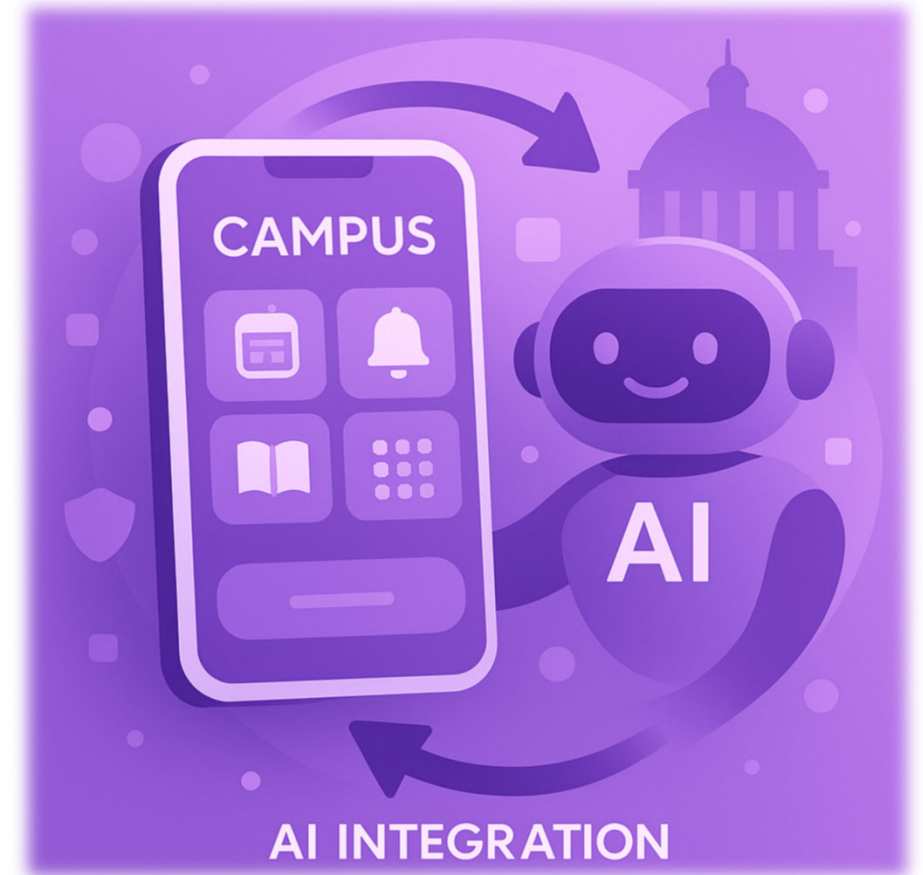
Q3

What's coming:

- Seamless integration of institutional AI services inside campusM.
- Automatic authentication - no separate logins.
- Delivered via an embedded chat interface (behind a tile).
- Context pass through to ensure AI interface understands the user's context.

Impact for you:

- **For students:** One unified digital campus where AI support feels native.
- **For institutions:** Brings your AI strategy into campusM, without duplication or fragmented experiences.



Accessibility Compliance (WCAG 2.2 AA)

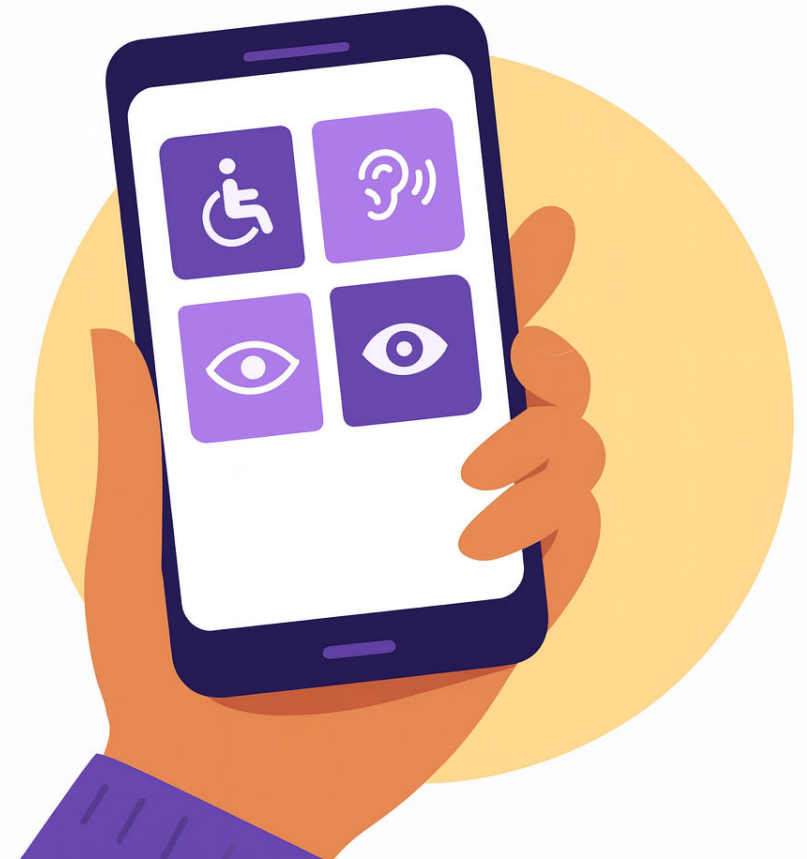
Q3

What's coming:

- Completion of accessibility upgrades across campusM.
- Meets WCAG 2.2 AA standards.
- Includes adjustments to color contrast, navigation, keyboard use, and alternative text support.

Impact for you:

- **For students:** A truly inclusive app for all.
- **For institutions:** Meets compliance obligations and strengthens commitment to equity.



Dark Mode

Q4

Community-Driven
Development



What's coming:

- Full dark mode across the entire app, not just the homepage.
- Admin control of light/dark palettes in App Manager.
- Automatic warning for non-accessible color choices.
- Simple mode for quick branding, advanced mode for fine control.
- User preference: Light, Dark, or Auto (follow device).

Impact for you:

- **For students:** A feature they've been asking for – eye-friendly and stylish.
- **For institutions:** Extends brand consistency across modes.





TL;DR

So, in summary...

Theme Developments at a glance

Our development themes goes beyond delivering features.



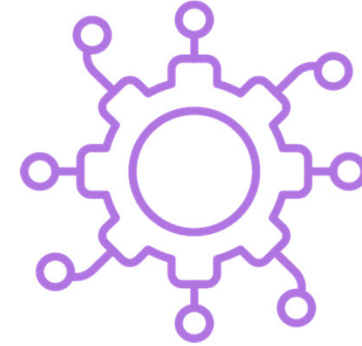
Smarter Student Experiences

- Task Board User Experience Enhancements
- LMS Assignment & Leganto Reading List due date Integrations
- Time Management Assistant



Personalized & Relevant Experiences

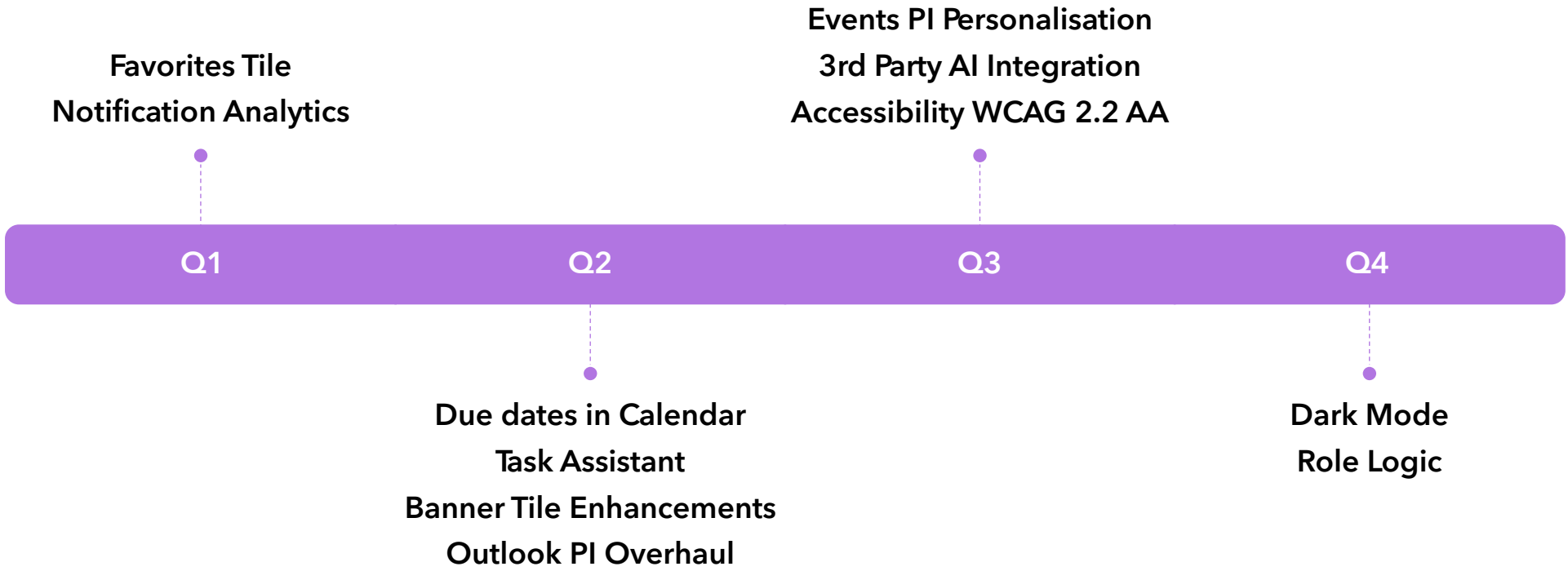
- Favorites Container Tile
- Banner Tile Enhancements
- Events PI Personalization
- Role Logic



Integrated and Inclusive Experiences

- Notification Analytics
- Outlook Product Integration Overhaul
- AI Agent Integration
- WCAG Compliance
- Dark Mode

Sequencing Overview for 2026





Thank You

© 2025 Clarivate

Clarivate and its logo, as well as all other trademarks used herein are trademarks of their respective owners and used under license.