

Welcome to SFX Web Training Session 6

Valli Hoski Implementation Librarian

Objectives

- Know what applications SFX runs on
- Be aware of how SFX uses symbolic links
- Be able to navigate through the SFX server's directory structure.
- Differentiate between the different types of users for SFX
- Become familiar with the Server Admin Utility and its function.

Agenda

- SFX File Structure
- SFX Monthly Update
- SFX Users
- SFX Server Admin Utility
- SFX Documentation



3



SFX File Structure

Valli Hoski Implementation Librarian

SFX File Structure

- The SFX installation is contained in one directory:
/exlibris/sfx_ver/sfx_version_3
- This directory contains:
 - Separate directories which hold separate SFX instances
 - One applications directory



5

SFX File Structure: Applications Directory

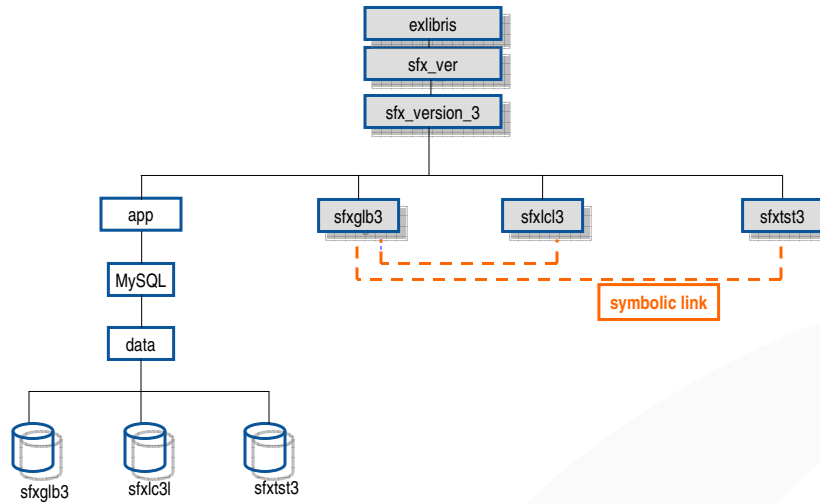
/exlibris/sfx_ver/sfx_version_3/app/

- contains all supporting software needed to run SFX:
 - MySQL [v. 4.1.8]
 - Apache Web server [v. 2.0.50]
 - Perl [v. 5.8.5]

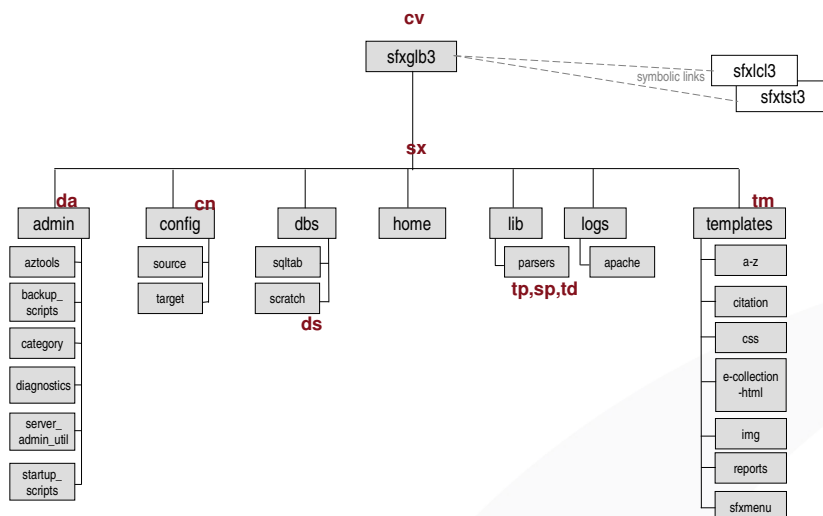


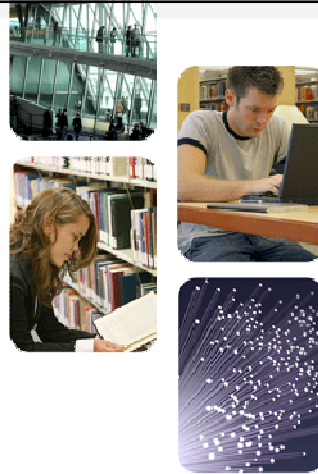
6

SFX File Structure: Standard Installation



SFX File Structure: Diagram

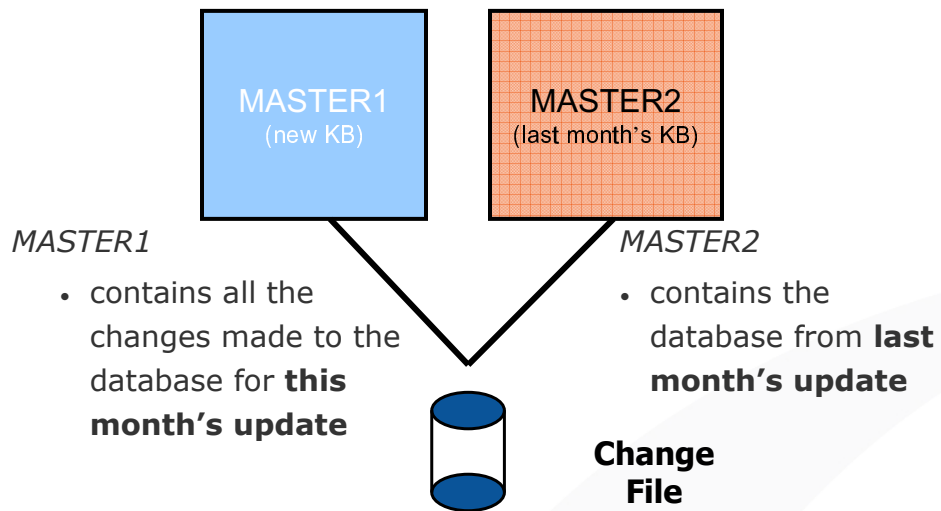


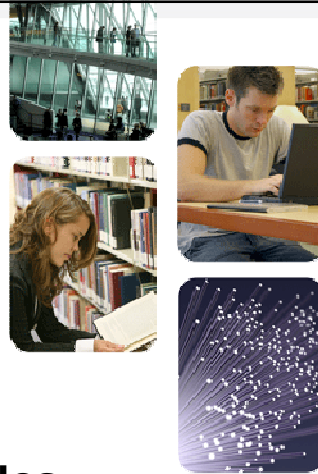


SFX Database Update

Valli Hoski Implementation Librarian

Database Update Process





SFX Database Update Rules

Valli Hoski Implementation Librarian

SFX Database Update Rules

- 1. Changes** are **not made** to SFX KnowledgeBase if you have **localized a target, target service, or object portfolio.**
- 2. Deletions** are **not made** to the SFX KnowledgeBase if you have localized a target, target service, or object portfolio.
- 3. New KB content** is **added** as **inactive** by **default**

SFX Database Update Rules

- Decide whether or not to override these update rules by applying settings at the **Target Service** level

AutoActive Automatic Update



13

Overriding Database Update Rule #3

- Rule #3:
New KB content is added as **inactive** by **default**
- Overriding the rule** is useful for aggregator targets where **you own everything the provider sells**.

AutoActive

Internal ID 10000000000457 Submit

Target AIP_SCITATION_ACOUSTICAL_SOCIETY_OF_AMER

Service getFullText

Public Name

Parser AIP-SCITATION

Parse Param `url1=https://link.rup.org/link/? &
url2=https://publib.aps.org/ &
url3=https://link.aps.org/abstract/ &
q=`

Displayer

Object Lookup Yes No

Threshold (global)

Threshold (local)

Compose Clear

Availability Active Inactive

Proxy AutoActive CrossRef

Automatic Update



14

Overriding Database Update Rules #1 and #2

- Rule #1:
Changes are **not made** to SFX KnowledgeBase if you have **localized a target, target service, or object portfolio**.
- Rule #2:
Deletions are not made to the SFX KnowledgeBase if you have localized a target, target service, or object portfolio.
- **Overriding the rule** is useful for aggregator targets when **you don't think you can keep up with changes the provider makes** to title lists.

Automatic Update

Internal ID 100000000000457 Submit

Target AIP_SCITATION_ACOUSTICAL_SOCIETY_OF_AMER

Service

Public Name

Parser AIP_SCITATION

Parse Param

Displayer

Object Lookup Yes No

Threshold (global)

Threshold (local)

Compose Clear

Availability Active Inactive

Proxy AutoActive CrossRef

Automatic Update



15



SFX Database Update Reports

Valli Hoski Implementation Librarian

Database Update Reports

- Two formats: HTML and TEXT (tab-delimited)

KBUpdate Reports	
Access	Tool Name
✓	TEXT Report
✓	HTML Report

- Information about:
 - Changed (and not changed) database items
 - Deleted (and not deleted) database items
 - New database items
- Only necessary to look at the HTML Reports

Database Update Reports: HTML

- Report on Active Material **only**

Admin Center > KBUpdate Reports > HTML Report

S·F·X ADMIN CENTER

Report: Updated Object Portfolios
For Revision : 20060101

Note: Only ACTIVE portfolios where Target and Target Service are ACTIVE are listed here.

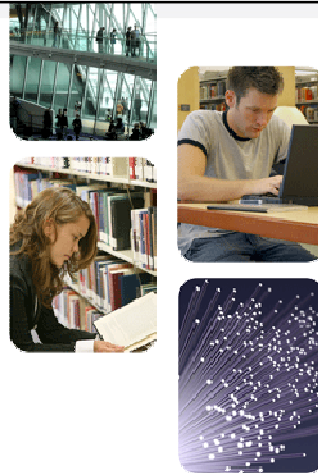
LINK	STATUS	INTERNAL_ID	OBJECT	TITLE	TARGET	TARGET SERVICE	PARSER	PARSE_PARAM	LOCAL THRESH
	Before Update	110994080944000	986870271003	Today's chemist at work	American Chemical Society	getFullTxt	Bulk-BULK	jsay=http://pubs.acs.org/journals/towee7/index.html	
KB	After Update	110994080944000	986870271003	Today's chemist at work	American Chemical Society	getFullTxt	Bulk-BULK	jsay=http://pubs.acs.org/journals/towee7/index.html	
	Before Update	100000000047369	110878979592721	Transforming anthropology	AnthroSource	getFullTxt		jsay=tan	
KB	After Update	100000000047369	110878979592721	Transforming anthropology	AnthroSource	getFullTxt		jsay=tan	
	Before Update	111054008792000	054925504781	Chemistry & biology	Cell Press	getFullTxt		jsay=http://www.chembiol.com	
KB	After Update	111054008792000	054925504781	Chemistry & biology	Cell Press	getFullTxt		jsay=http://www.chembiol.com	
	Before Update	111081246578069	054925547291	Canadian Association of	DOAJ Directory of Open Access	getFullTxt		jsay=http://ma.ca/aj	

Database Update Reports: Checking the Reports

- Check the 'not changed' and 'not deleted' sections for all tables.
- Use 'KB' button to make the change/deletion in the database if necessary



19



SFX Users

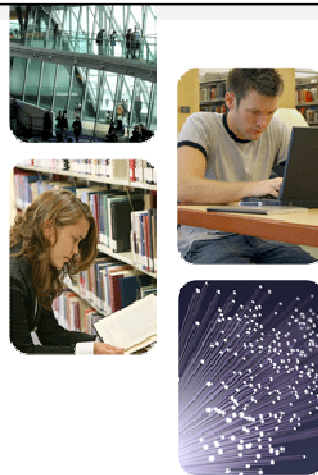
Valli Hoski Implementation Librarian

SFX Users

- Each instance has two server side users:
 - UNIX user
 - administrates the unix file system
 - MySQL user
 - used by programs to access the database
- And a third "type" of user:
 - SFXAdmin access
 - Different SFXAdmin users may have different privileges in KBManager
 - System administrator can create custom privileges



21



SFX Server Admin Utility

Valli Hoski Implementation Librarian

Server Admin Utility

- A command-line utility used to accomplish various server-related tasks
 - Start/stop Apache & MySQL
 - Change MySQL and UNIX user passwords
 - Copy one instance to another (db and files)
 - Clean SFX directories
 - Manage statistical data (on2off, archive, SFX_REQUESTS table)
 - Run and schedule A-Z index build



23

Login to Server Side Use line commands to navigate

```
10.100.230 - PuTTY
login as: valli
valli@10.100.2.30's password:
Last login: Tue Dec 16 13:53:36 2008 from 145.36.100.39
1 valli@scbeta.corp.exlibrisgroup.com:ver_3> ls
bx_install.pl  french_ui_patch.run  mysql_mem_usage.pl  sfx_schema.sql  ssh
df             my.cnf.test             robots.txt          sms
2 valli@scbeta.corp.exlibrisgroup.com:ver_3> pwd
/exlibris/sfx_ver/sfx_version_3/valli/home
3 valli@scbeta.corp.exlibrisgroup.com:ver_3> █
```

```

necker.config_
l.config.sample
config

lsbn.config_
_type_img.config_
proxy_httpd.config___.backup
proxy_httpd.config___.edit2006sep08
proxy_httpd.config___.orig2006sep21
proxy_httpd_ssl.config___.edit2006sep08
proxy_httpd_ssl.config___.orig2006sep21
nfig
_public_name.config_
_public_name.config_.du
_public_name.config_.sp
config
config
ver.config
rices.config_

rgets.config_
g.sample
elds.config_
ictionary
missions.config
fo.config
kup.config
$beta.corp.exlibrisgroup.com:ver_3> vi crossref.config
$beta.corp.exlibrisgroup.com:ver_3> cd ..
$beta.corp.exlibrisgroup.com:ver_3> ls
chive cgi config dbs files home lib logs sfxadmin templates
$beta.corp.exlibrisgroup.com:ver_3> cd admin
$beta.corp.exlibrisgroup.com:ver_3> ls
l      database          e-collection-step-2  kb          stats
ver3   debug_external_export.pl filesystem          kbtools     subs
cripts diagnostics         imanager           revision    test.log
cripts e-collection          init_scripts       server_admin_util unicode_dictionary
e-collection-step-1  journal_subscription startup_scripts
$beta.corp.exlibrisgroup.com:ver_3> server_admin_util

```

```

Main Menu
1 Start/Stop services
2 Filesystem maintenance
3 Change passwords
4 Database maintenance
5 Statistics
6 Diagnostics
7 AZ Index
8 AZ Index Version 3
9 Ranking Index
10 Export GOOGLE institutional holdings file
11 Revision update
12 Journal Subscription Index
13 Primo Export
14 Verde Export

q Exit (Applies to all menus)
m Main menu (Applies to all menus)
Please select [1-14,q,m]: █

```

```
Main Menu
 1 Start/Stop services
 2 Filesystem maintenance
 3 Change passwords
 4 Database maintenance
 5 Statistics
 6 Diagnostics
 7 AZ Index
 8 AZ Index Version 3
 9 Ranking Index
10 Export GOOGLE institutional holdings file
11 Revision update
12 Journal Subscription Index
13 Primo Export
14 Verde Export

q Exit (Applies to all menus)
m Main menu (Applies to all menus)
Please select [1-14,q,m]: 5

Statistics
 1 Move data from online to offline
 2 Archive statistics
 3 Load statistics from a file
 4 Show stats tables monitor information
 5 Scheduling for statistics maintenance tasks
 6 Clear SFX_REQUEST table
Please select [1-6,q,m]: █
```

```
Main Menu
 1 Start/Stop services
 2 Filesystem maintenance
 3 Change passwords
 4 Database maintenance
 5 Statistics
 6 Diagnostics
 7 AZ Index
 8 AZ Index Version 3
 9 Ranking Index
10 Export GOOGLE institutional holdings file
11 Revision update
12 Journal Subscription Index
13 Primo Export
14 Verde Export

q Exit (Applies to all menus)
m Main menu (Applies to all menus)
Please select [1-14,q,m]: 8

AZ Version 3 Tools
 1 (Re)build the AZ index
 2 Show scheduled AZ index builds
 3 Schedule an AZ index build
Please select [1-3,q,m]: 2

AZ indexing schedule is as follows:
[1] 04:33 of every Sunday of every month
Would you like to remove any of these? [y/N] █
```

```
Main Menu
 1 Start/Stop services
 2 Filesystem maintenance
 3 Change passwords
 4 Database maintenance
 5 Statistics
 6 Diagnostics
 7 AZ Index
 8 AZ Index Version 3
 9 Ranking Index
10 Export GOOGLE institutional holdings file
11 Revision update
12 Journal Subscription Index
13 Primo Export
14 Verde Export

  q Exit (Applies to all menus)
  m Main menu (Applies to all menus)
Please select [1-14,q,m]: 10

Export GOOGLE institutional holdings Tools
 1 (Re)Export GOOGLE institutional holdings file
 2 Show scheduled export GOOGLE institutional holdings file
 3 Schedule export GOOGLE institutional holdings file
Please select [1-3,q,m]: 2

There are no scheduled export GOOGLE institutional holdings tasks

Export GOOGLE institutional holdings Tools
 1 (Re)Export GOOGLE institutional holdings file
 2 Show scheduled export GOOGLE institutional holdings file
 3 Schedule export GOOGLE institutional holdings file
Please select [1-3,q,m]: █
```



SFX Documentation

Valli Hoski Implementation Librarian

SFX Documentation

- Systems Administrator Guide
 - Outlines necessary procedures for maintaining your SFX
 - Note: Statistics usage information is also covered in the General and Advanced User Guides.
- Monthly Release Notes
 - Updates customers on changes to SFX
 - Covers both software and KB Changes



31

Objectives

Together we've explored:

- How to add, change and update your SFX holdings
- How to use the SFX interface, options, and A-Z list for your library
- How to apply SFX reports and monthly updates to manage your SFX holdings and system

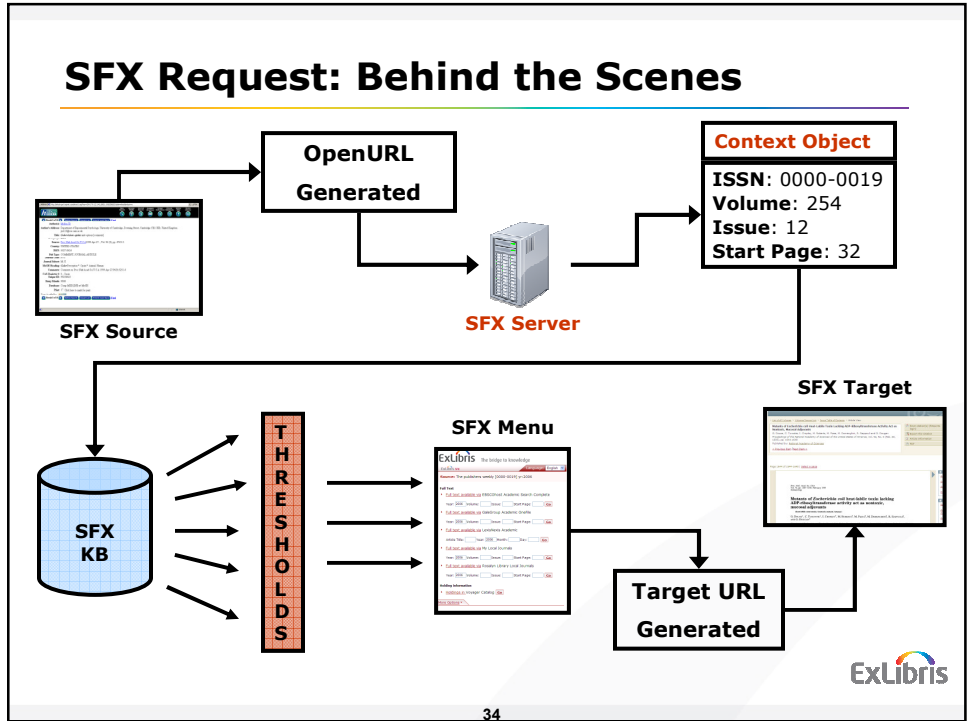


32

SFX Request: User Experience

The screenshot displays the ExLibris web interface. On the left, a search results sidebar shows details for the article 'Color vision: Opsins and options' by J. D. Mollon, including the journal 'Proceedings of the National Academy of Sciences of the United States of America' and the issue information. The main content area shows the article's title, author, and a 'Commentary' section. Two line graphs are visible, plotting 'Relative Sensitivity' against wavelength (nm) for different cone types (S, M, L). The right sidebar offers various services like 'Email this article to a colleague' and 'Download to citation manager'.

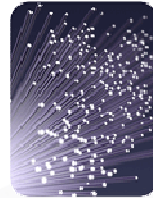
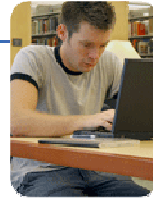
SFX Request: Behind the Scenes



Thank You!

Thank you for your ideas,
insights, and suggestions ...

Enjoy your new knowledge, and
share the SFX news with your
colleagues and your users ...



ExLibris

35

www.exlibrisgroup.com/sfx.htm

ExLibris
The bridge to knowledge